



LICEO ARTISTICO STATALE  
VINCENZO CIARDO • LECCE

# Liceo Artistico Statale “V. Ciardo” - Lecce

Corso P.O.N.

“Dai numeri alle forme geometriche”



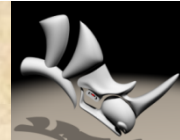
2007-2013 Con L'Europa investiamo nel vostro futuro!



Ministero dell'Istruzione, dell'Università e della Ricerca  
Dipartimento per la Programmazione  
D.G. per gli Affari Internazionali - Ufficio IV  
Programmazione e gestione dei fondi strutturali europei  
e nazionali per lo sviluppo e la coesione sociale

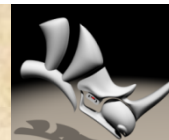


Unione Europea  
P.O.N. - "Competenze per lo Sviluppo" (FSE)  
P.O.N. - Ambiente per l'apprendimento (FESR)  
D.G. Occupazione, Affari Sociali e pari Opportunità  
D.G. Politiche Regionali



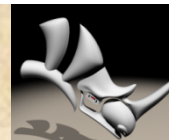
# Programma del corso

- Il disegno in 3D
- Differenza tra CAD e modellatore
- Presentazione di Rhinoceros: caratteristiche, settori di utilizzo, requisiti di sistema
- Differenza tra i modellatori Nurbs di Superfici e modellatori Solidi.
- Panoramica sulla modellazione Nurbs e superfici.
- Rhino: Interfaccia basica e personalizzazione.
- Linea di comando, cambio delle Viste, Zoom, Pan ecc.
- I principali strumenti di modellazione bidimensionale in Rhino: Linea, Arco, Ellissi, Cerchi, rettangolo, Spline ecc.
- Strumenti di quotatura in Rhino e messa in tavola
- Creazione di superfici: Estrusione, Loft, Sweeping, raccordi blending ecc.  
Editing di base: Rotazioni, traslazioni, Copiatura/replica di oggetti, Scalatura 2d/3d, Specchiatura.
- Primitive solide: Sfera, Parallelepipedo, Toro, Cilindro.
- Strumenti di Snapping.
- Operazioni Booleane: Unione, Intersezione e Differenza.
- Editing bidimensionale, raccordi tra curve e modifica dei punti.
- Rendering basico in Rhino: Impostazione della scena 3d, sorgenti luminose e texturing.



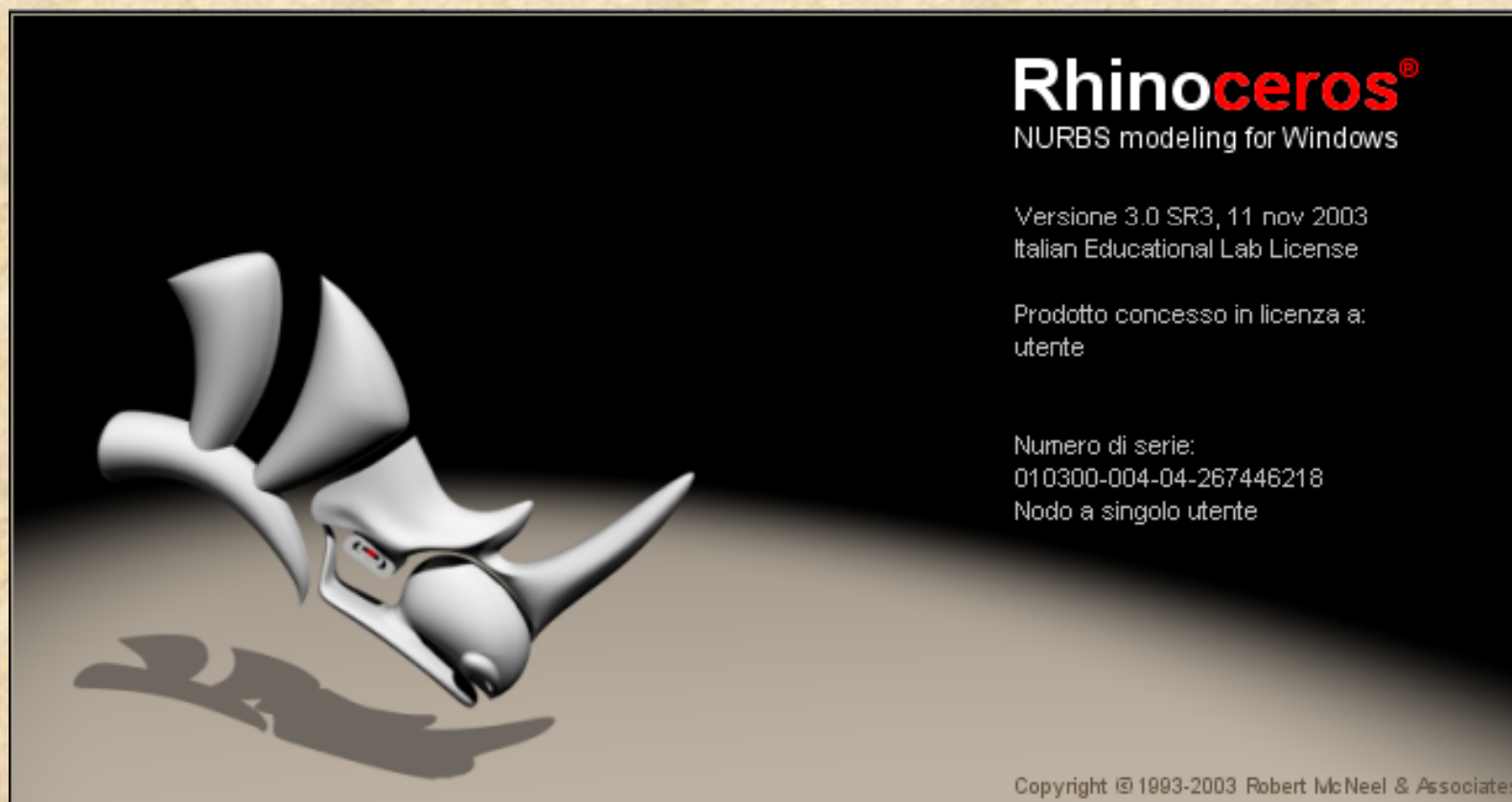
# Competenze acquisite

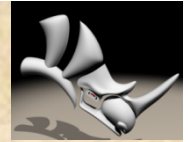
- Calcoli geometrici di base
- Rappresentazione di forme geometriche
- Risoluzione di problemi
- Utilizzazione del linguaggio matematico
- Utilizzazione di formule algebriche in calcoli geometrici
- Utilizzazione di strumenti multimediali
- Orientamento di genere



# Applicativo utilizzato

- Rhinoceros 3.0

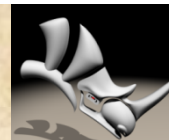




# Caratteristiche di Rhinoceros

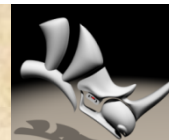
Rhino può creare, modificare, analizzare e tradurre curve, superfici e solidi NURBS\* in Windows. Non ci sono limiti per quanto riguarda la complessità, il grado o le dimensioni, ed è garantito il supporto delle mesh poligonali. In particolare, il programma offre le seguenti caratteristiche: **Nessun limite** nella capacità di modellazione, attraverso sofisticate funzioni, di geometrie 3D organiche; caratteristiche di programmi molto più costosi; possibilità di modellare ogni forma immaginabile.

- **Precisione** totale, che lo rende particolarmente adatto al design, all'analisi ed alla realizzazione di prototipi e progetti avanzati.
- **Compatibilità** con tutti gli altri programmi di design, drafting, CAM, ingegnerizzazione, analisi, rendering, animazione ed illustrazione.
- **Legge e ripara** file **IGES** molto complicati.
- **Accessibilità**. Così facile da imparare e da usare che l'utente si può concentrare sul disegno e la visualizzazione senza essere distratto dal software.
- **Velocità**, anche su un normale laptop. Non richiede nessun hardware specifico.
- **Alla portata di tutti**. Hardware comune. Rapidità di apprendimento. Stessa fascia di prezzo degli altri programmi Windows. Zero spese di mantenimento.

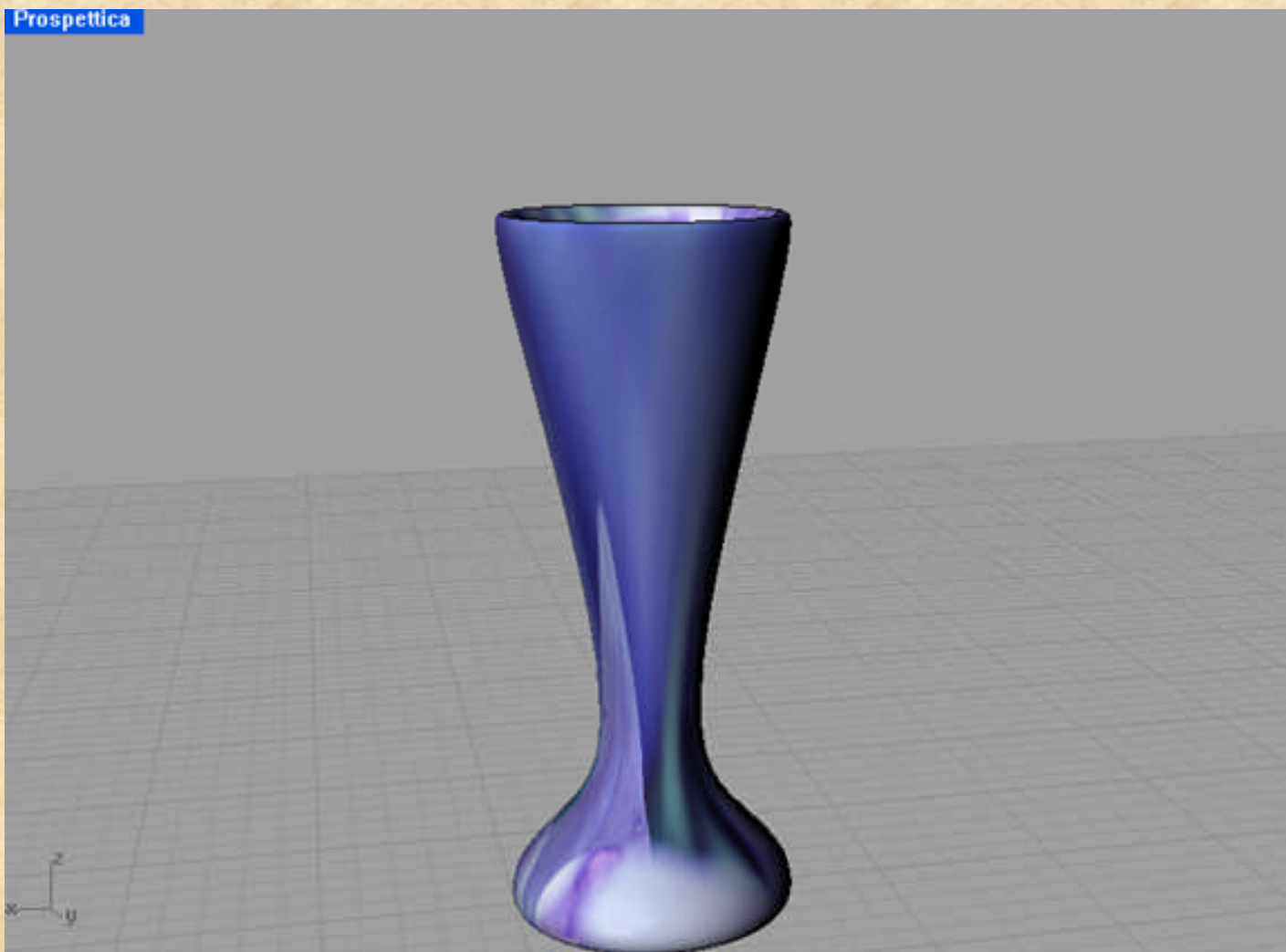


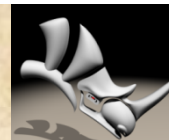
# Lavori realizzati





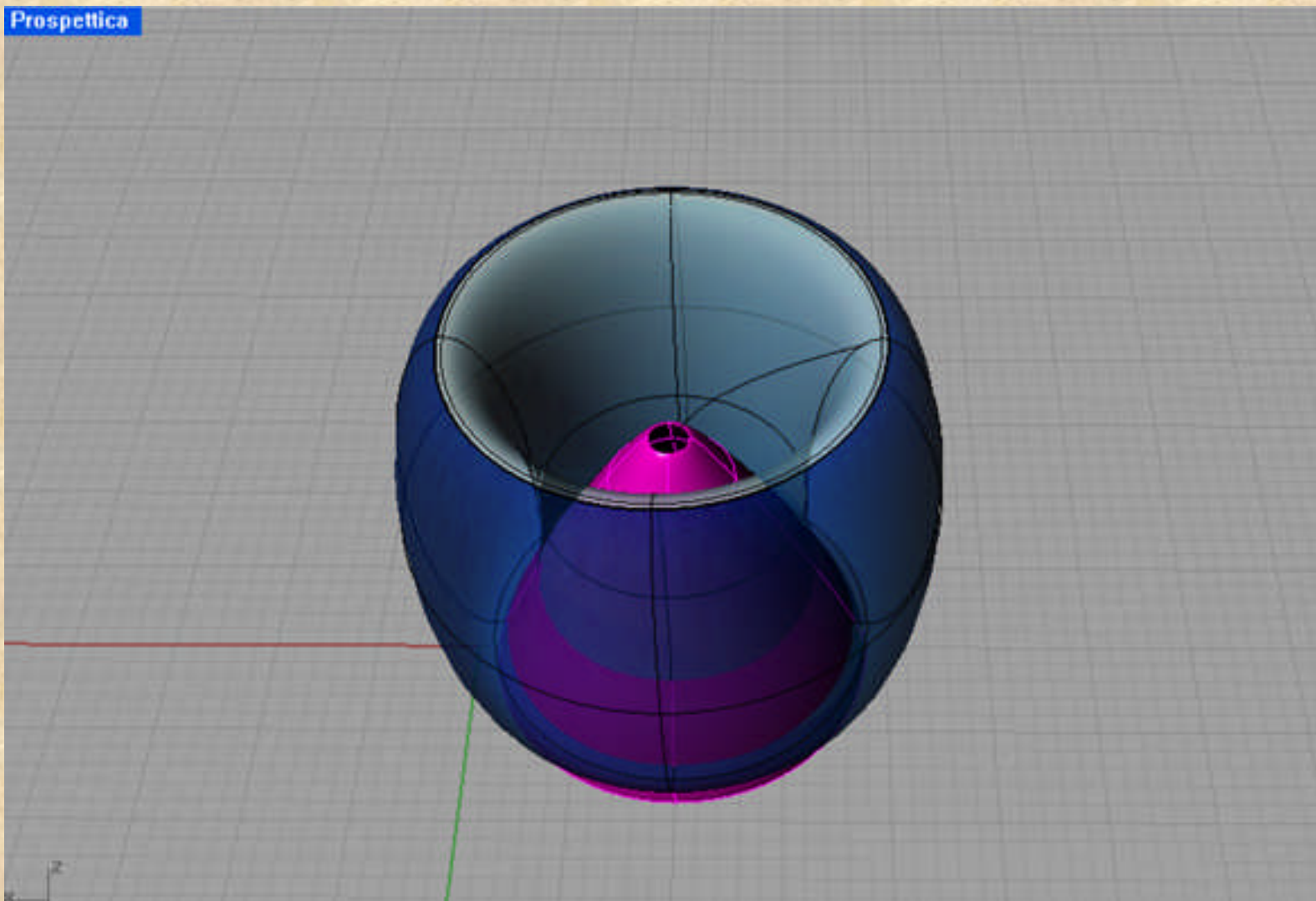
# Corineo G. – Fanales G.



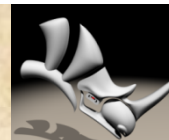


# Corineo G. – Fanales G.

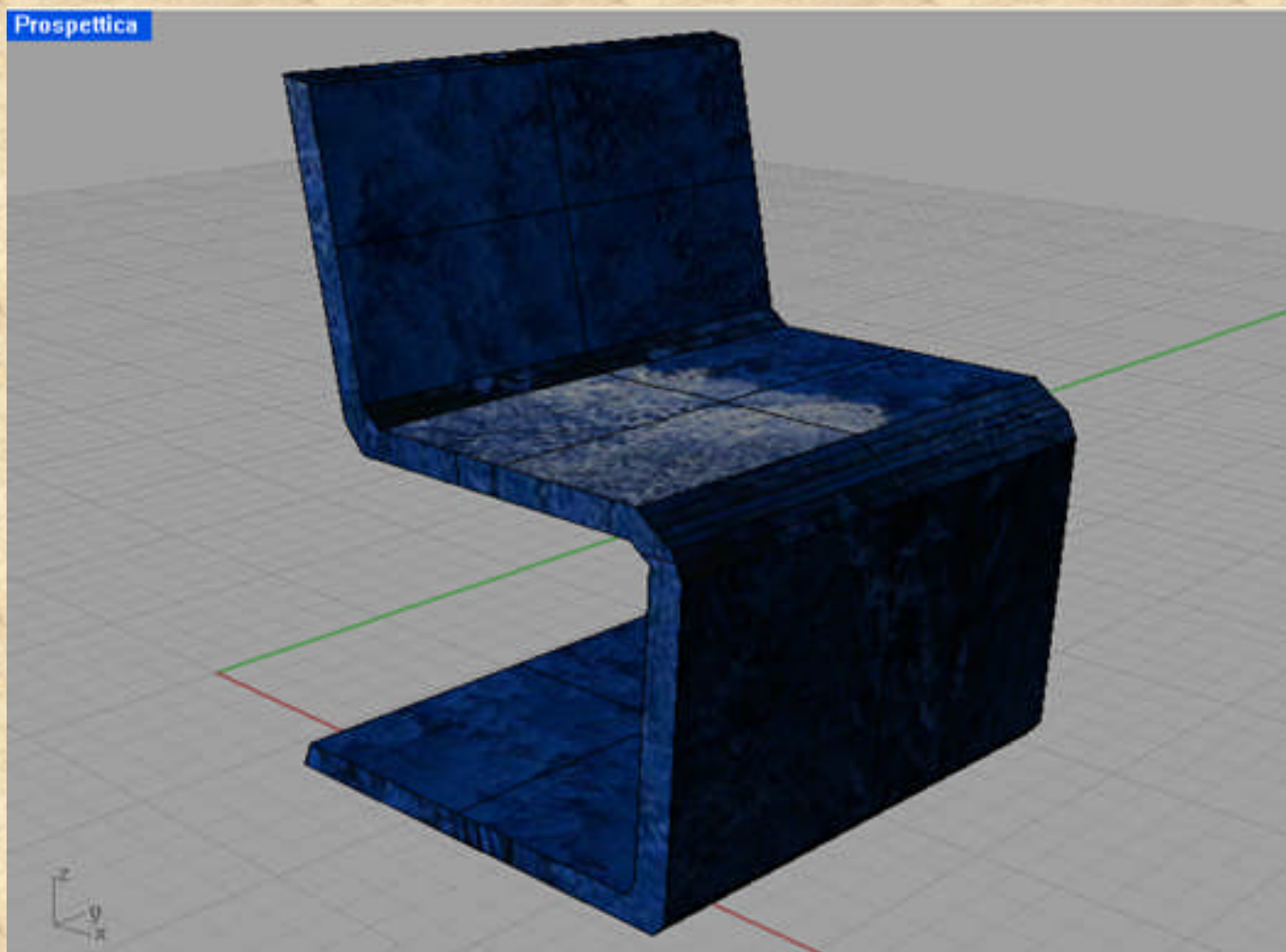
Prospettica

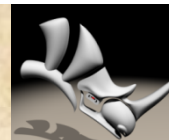






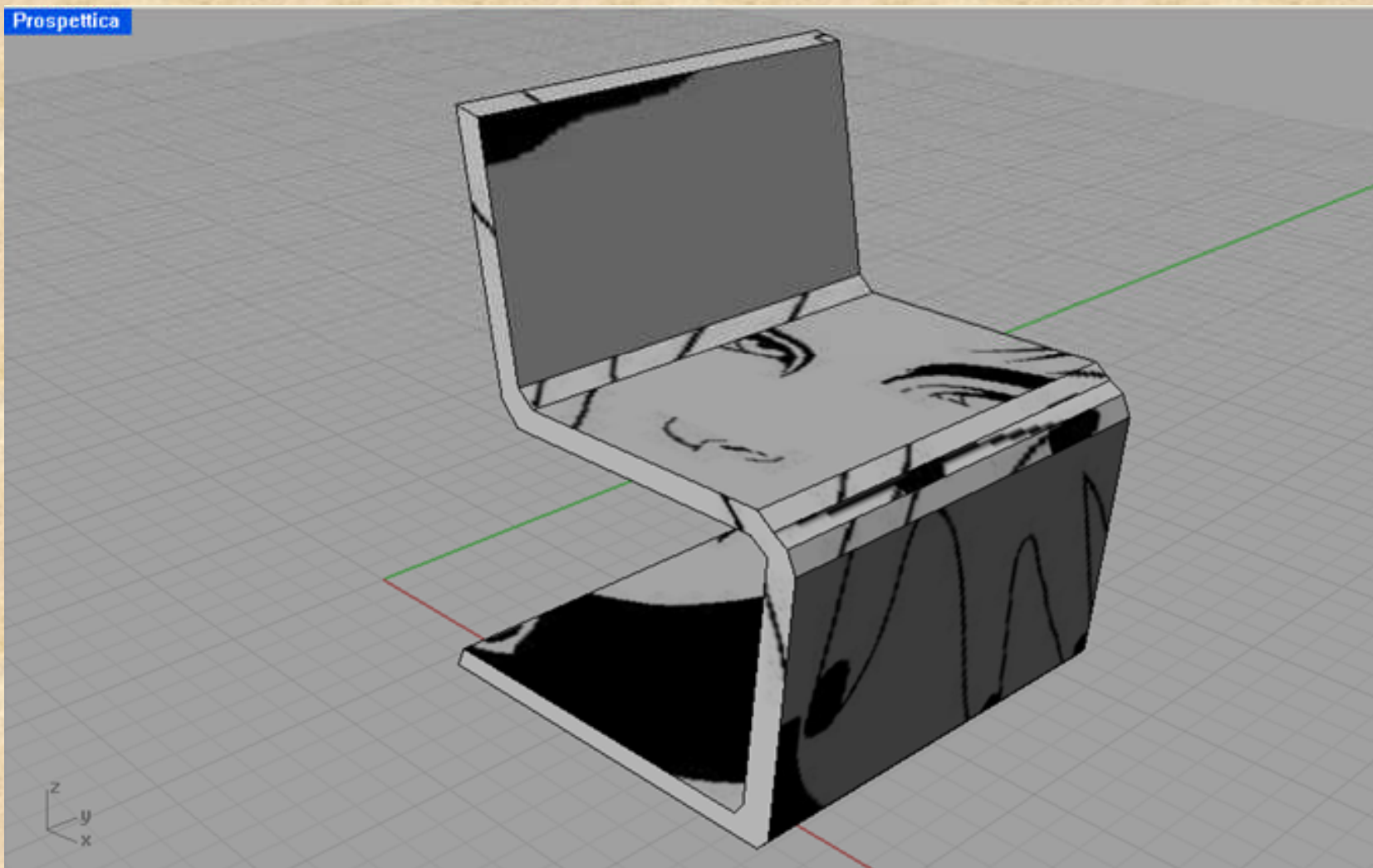
# Corineo G. – Fanales G.

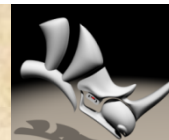




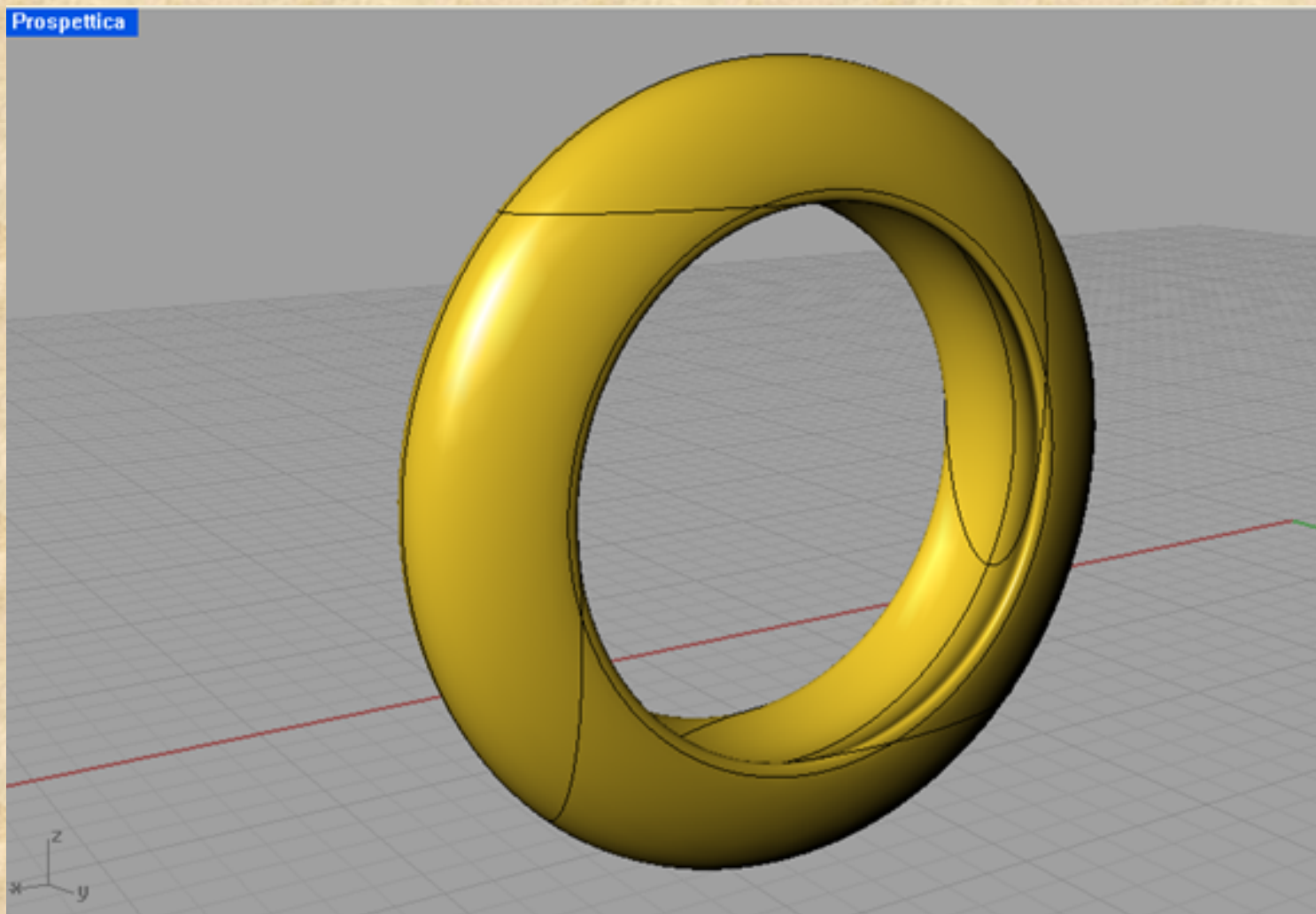
# Corineo G. – Fanales G.

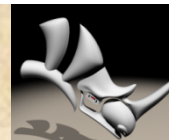
Prospettica



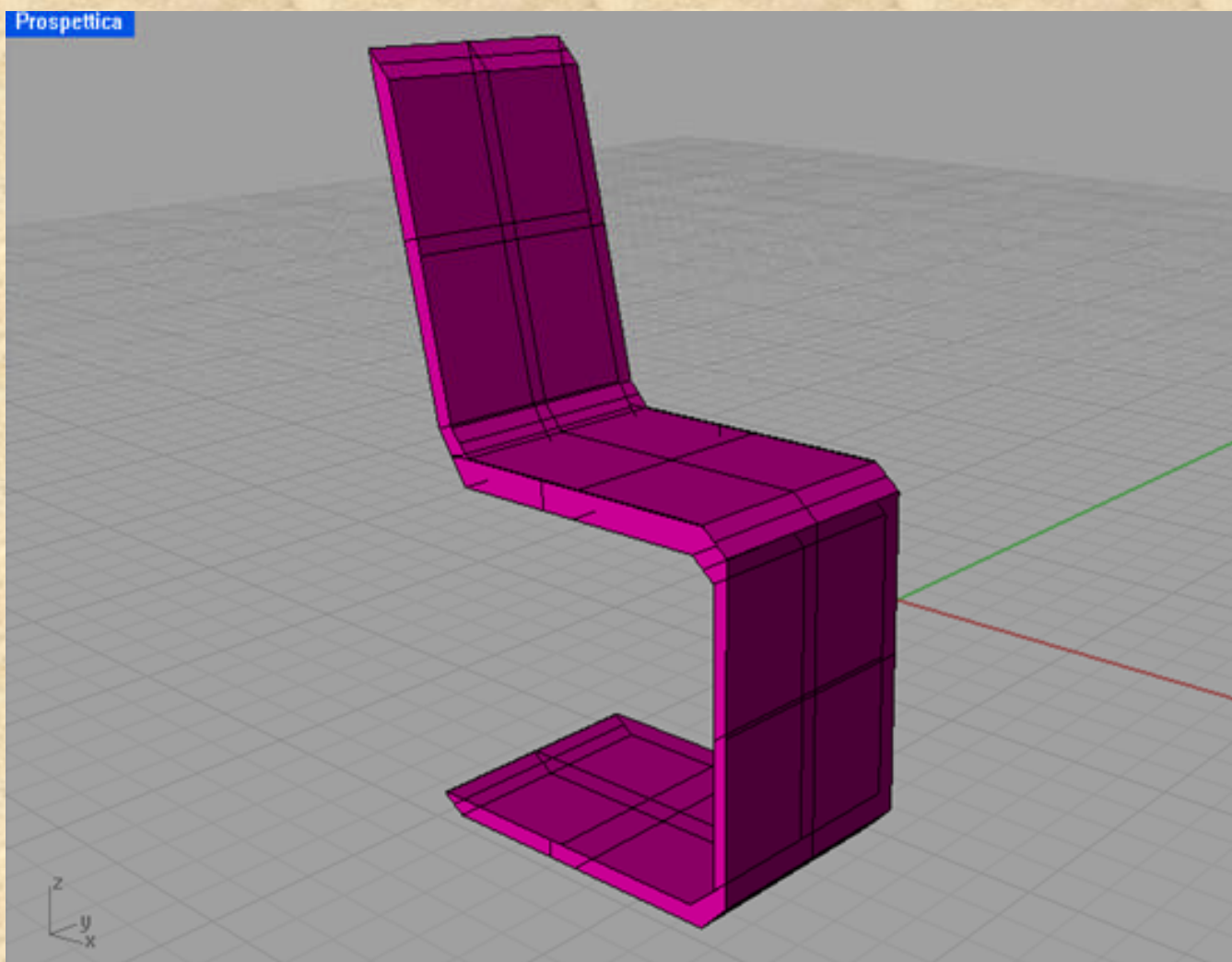


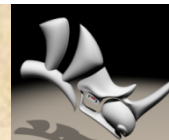
# Corineo G. – Fanales G.



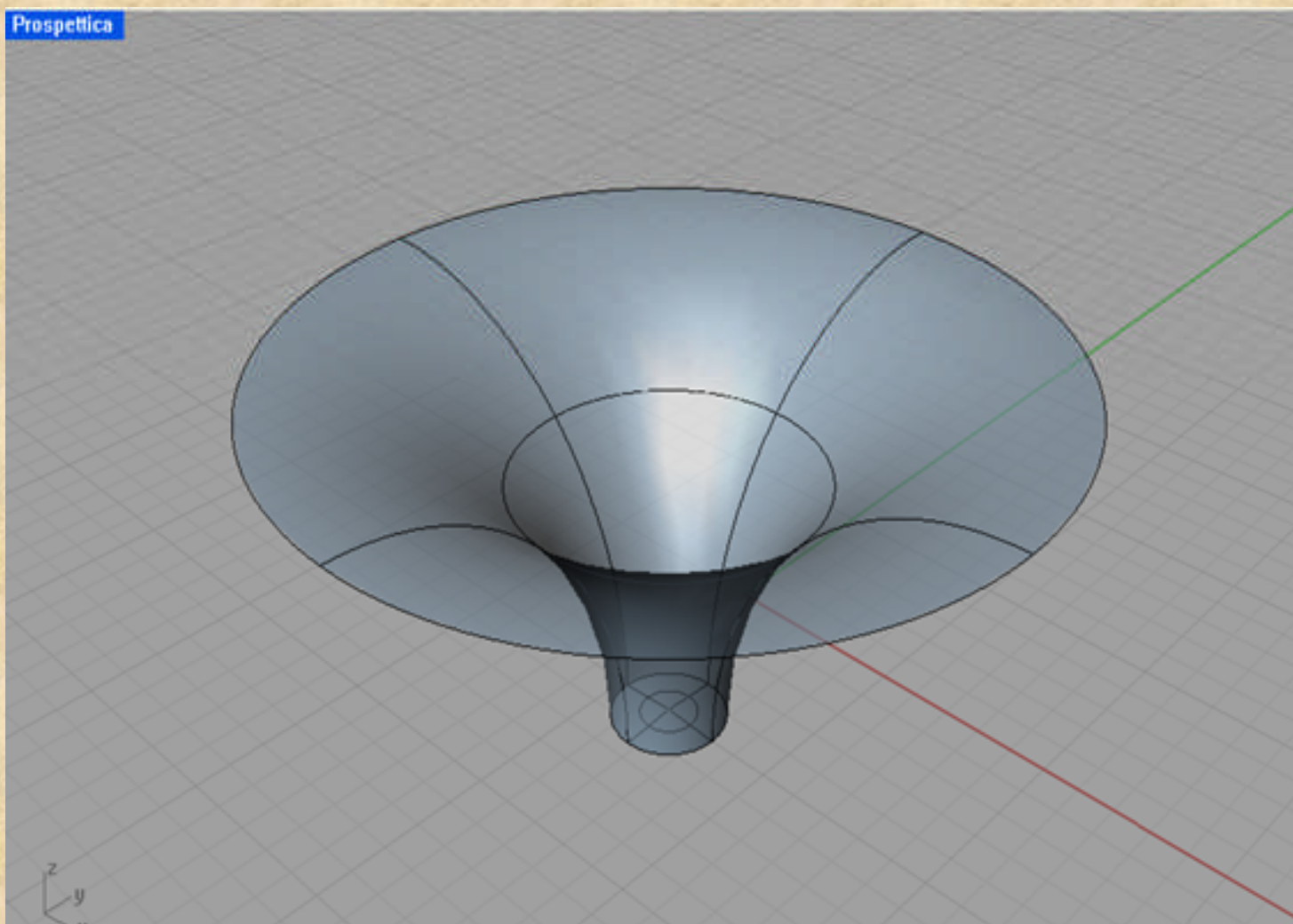


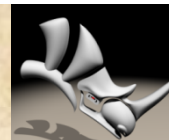
# Greco E. – Crety E.



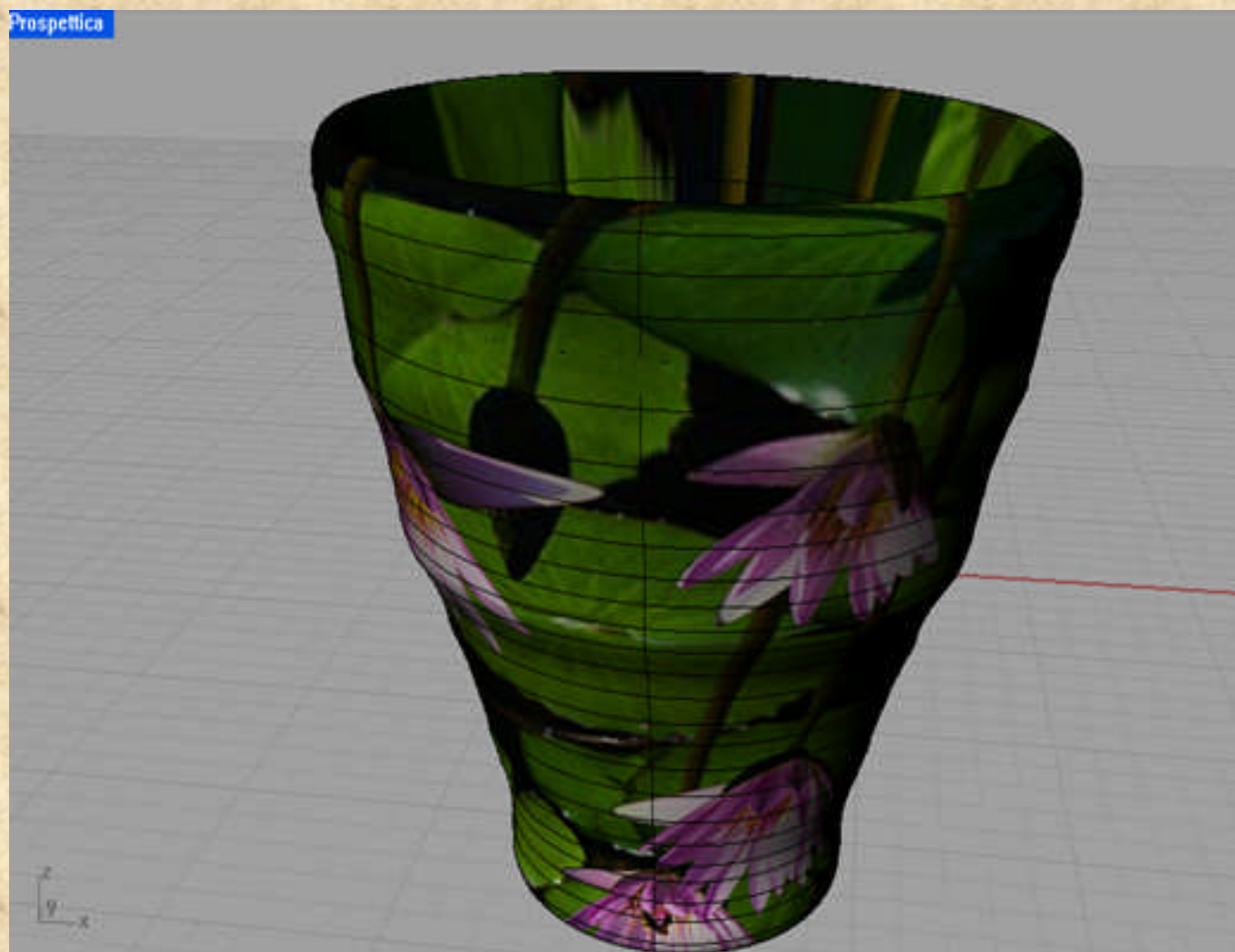


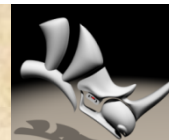
# Greco E. – Crety E.



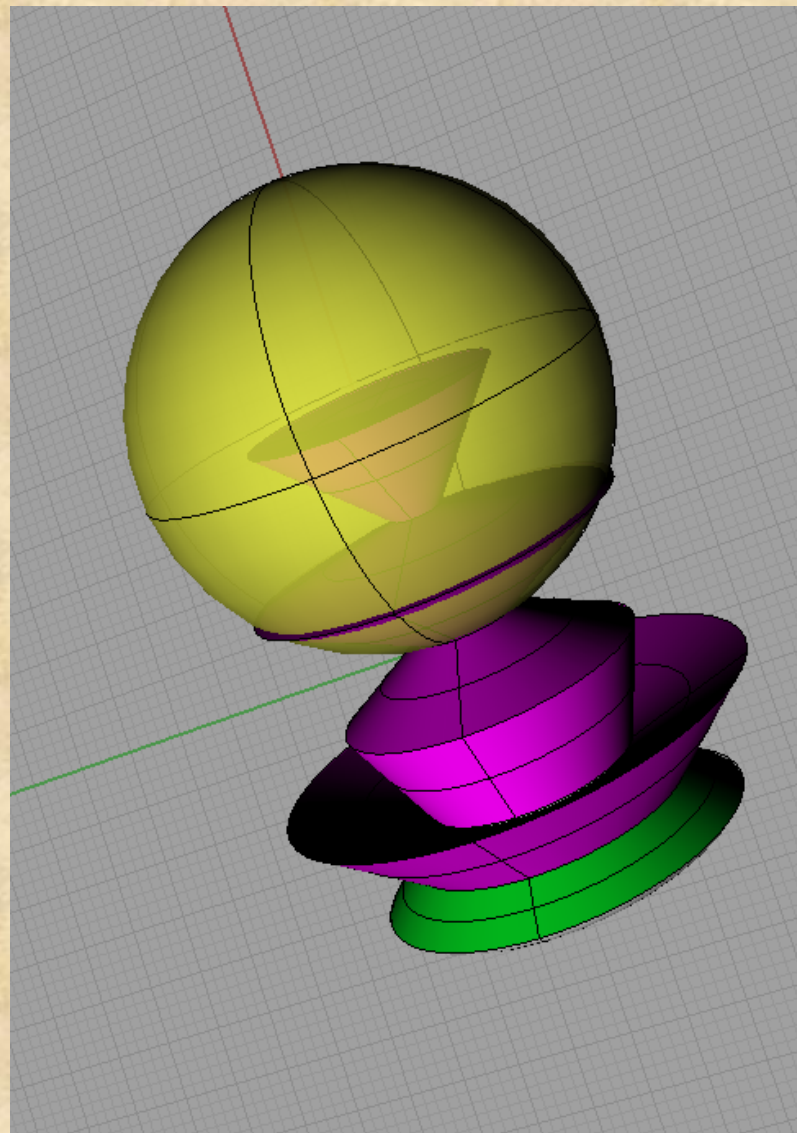


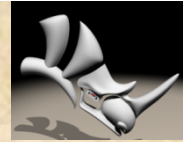
# Greco E. – Crety E.



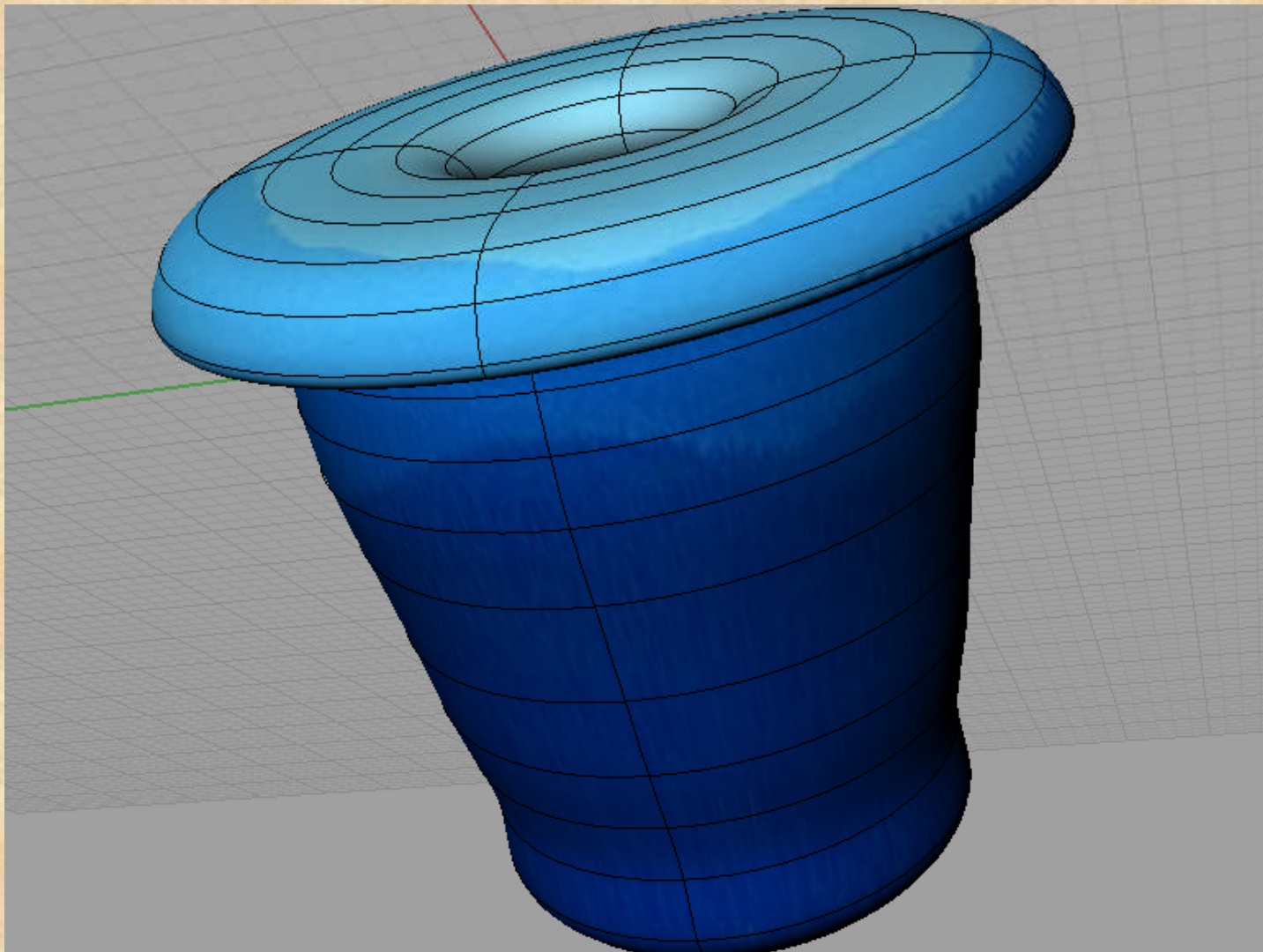


# Greco E. – Crety E.

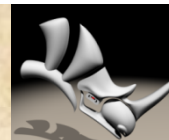




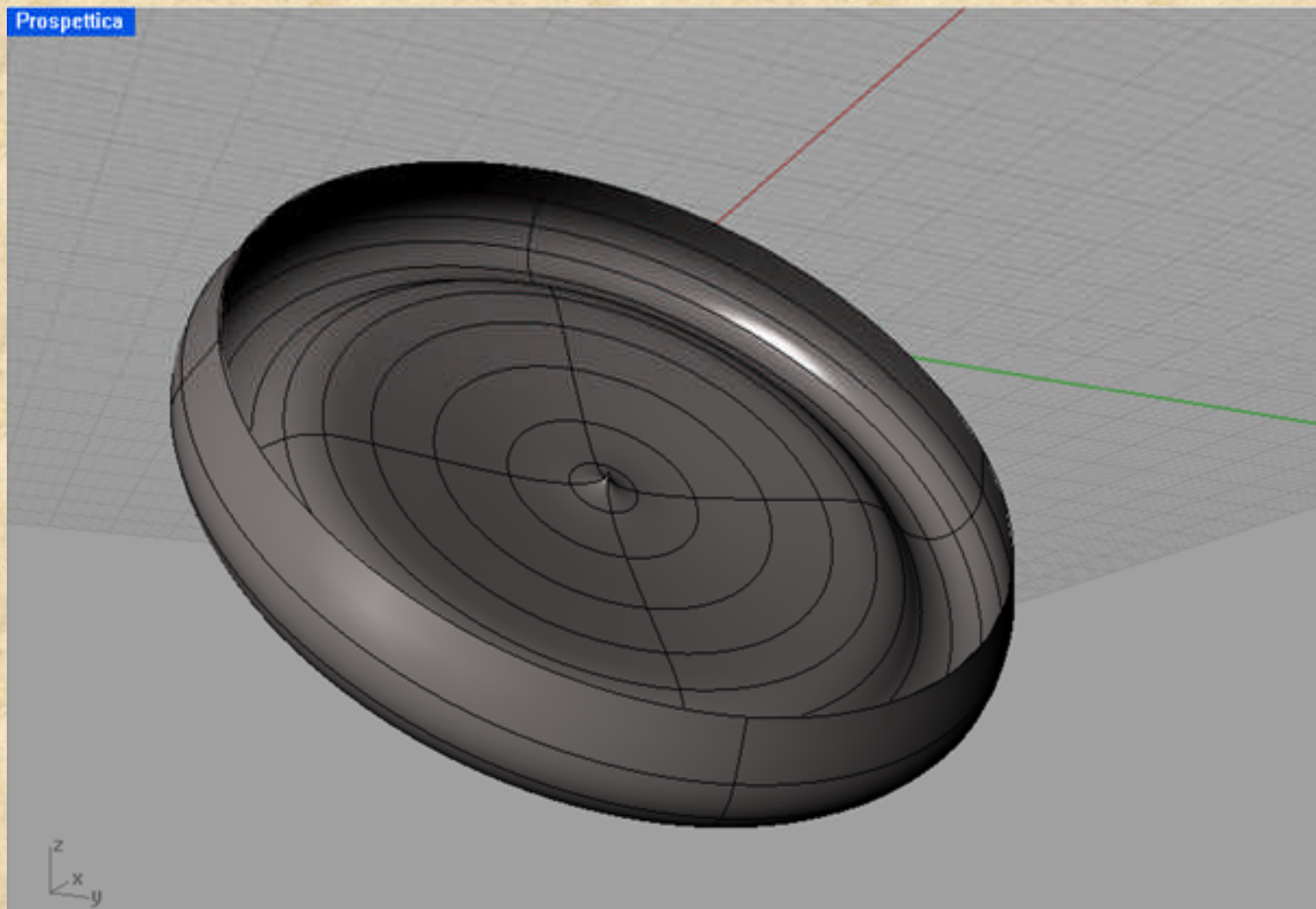
# Greco E. – Crety E.

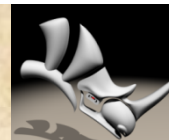






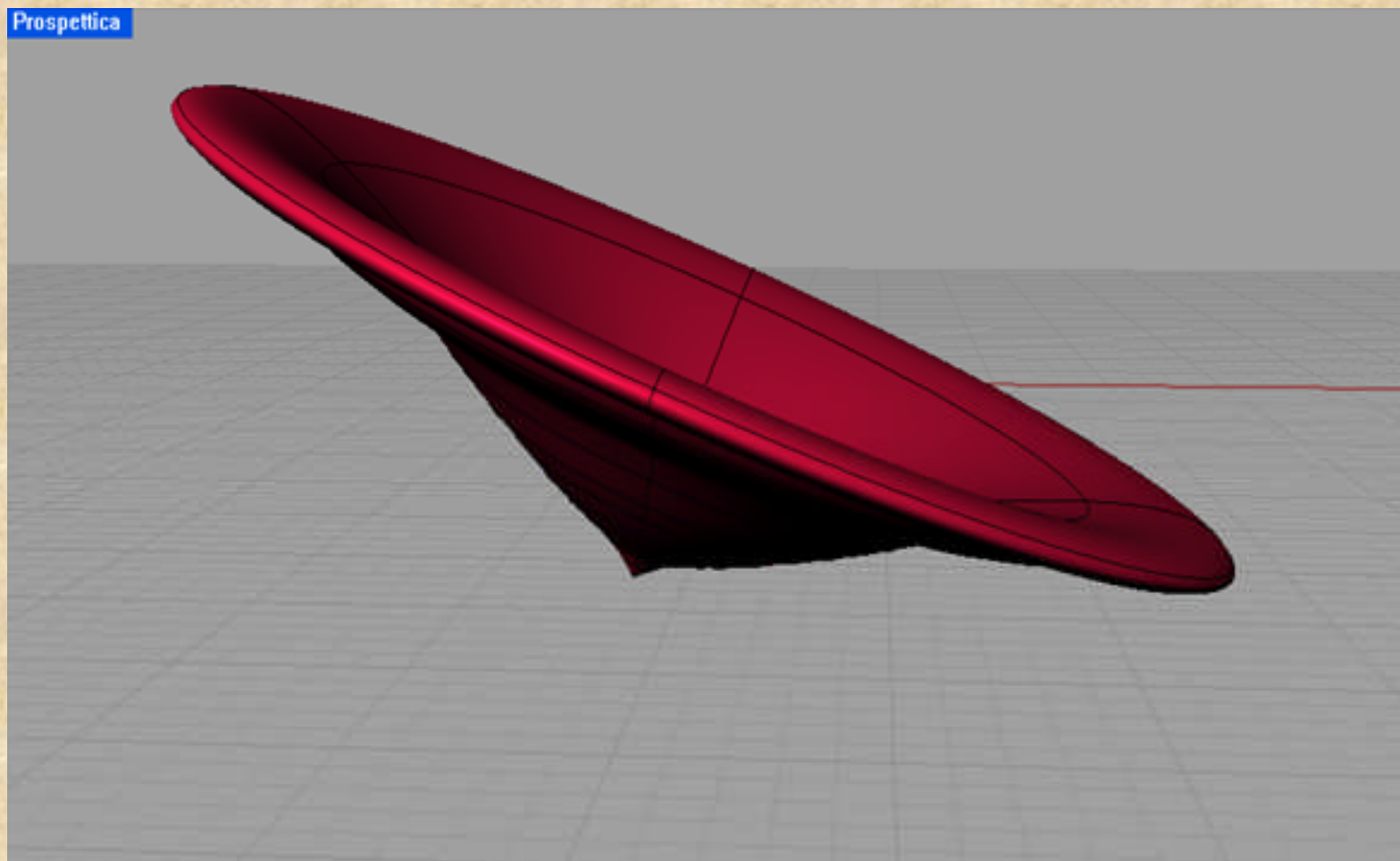
# Greco E. – Crety E.

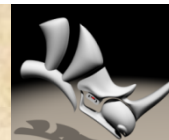




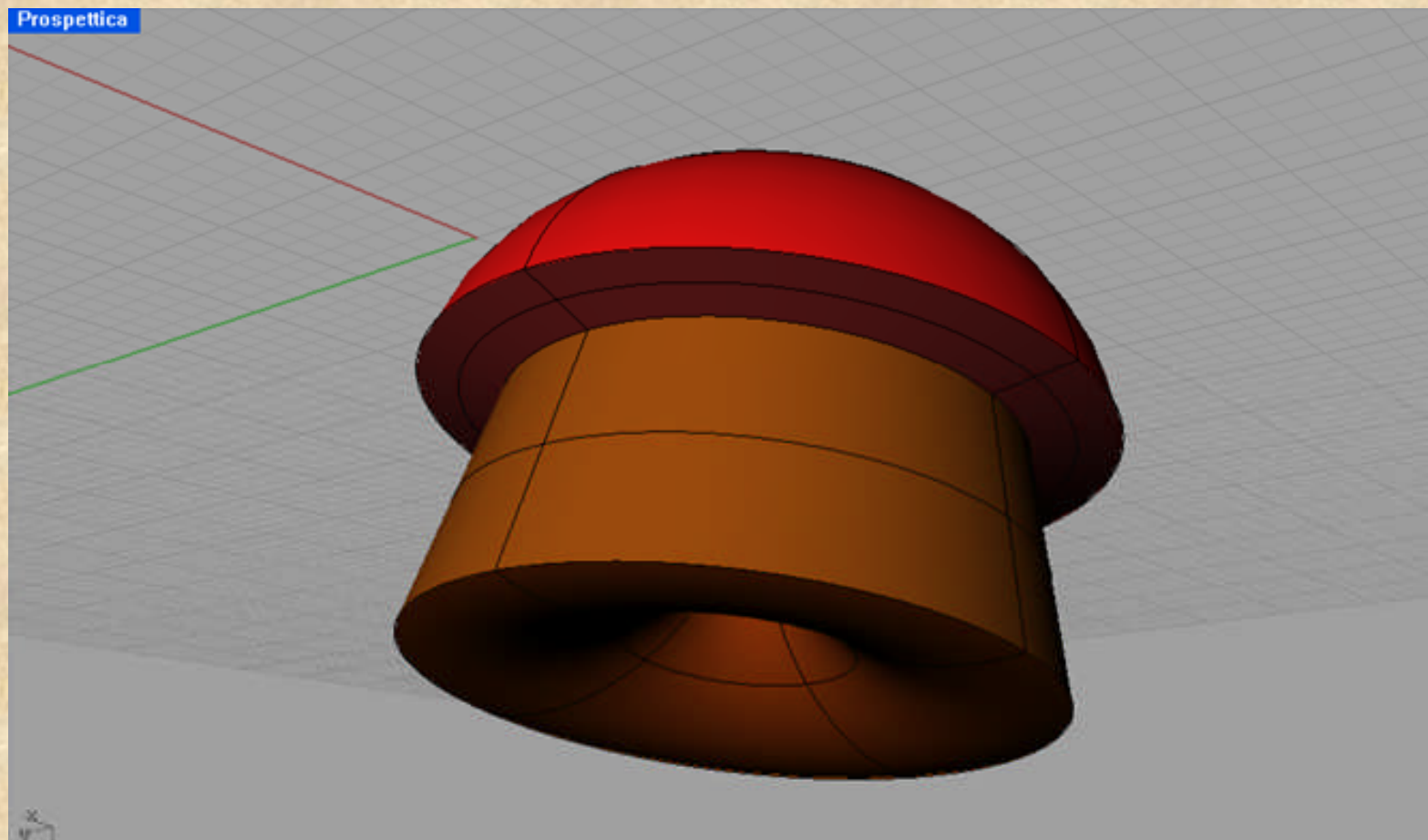
# Greco E. – Crety E.

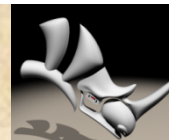
Prospettica





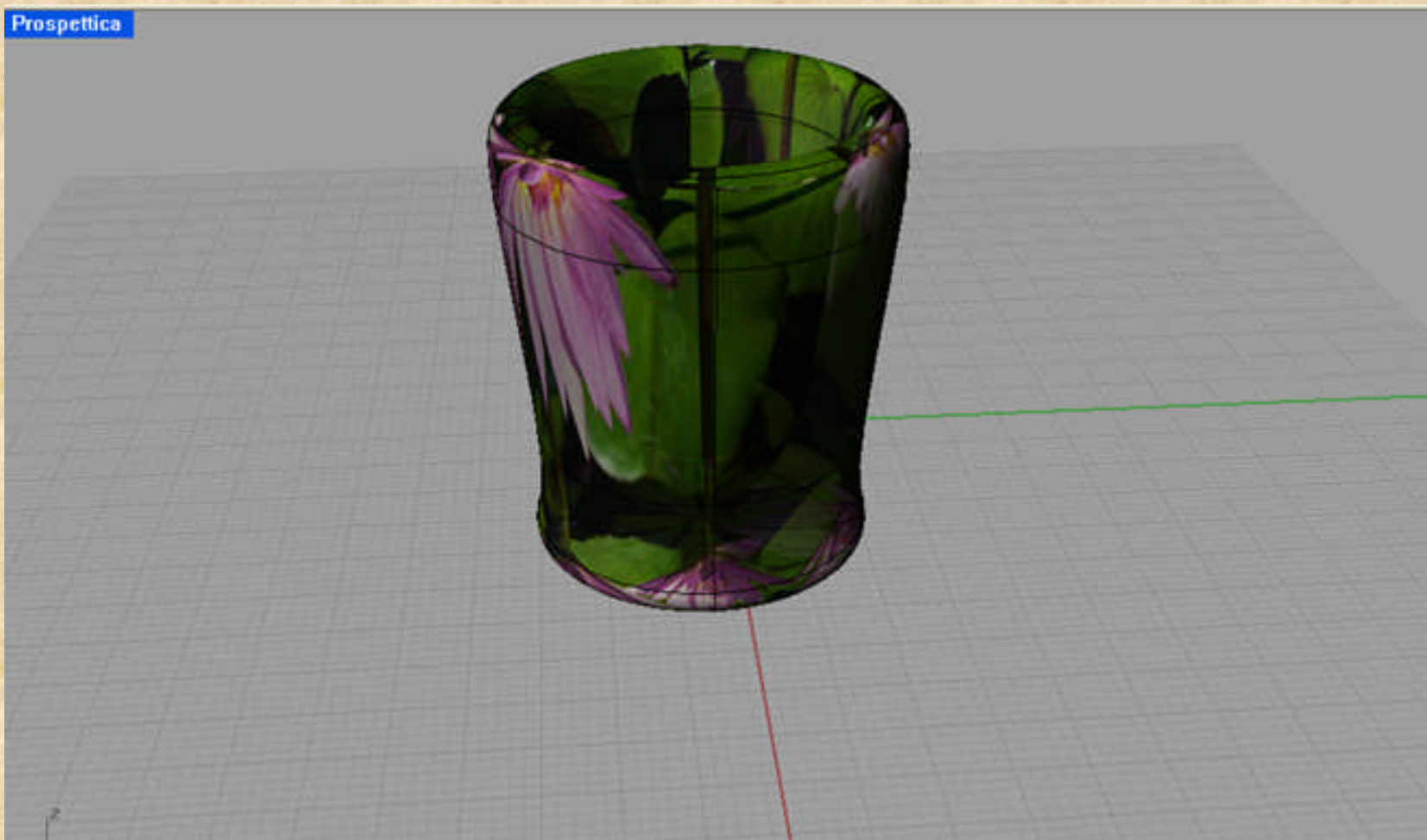
# Greco E. – Crety E.

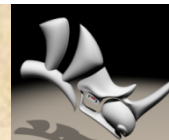




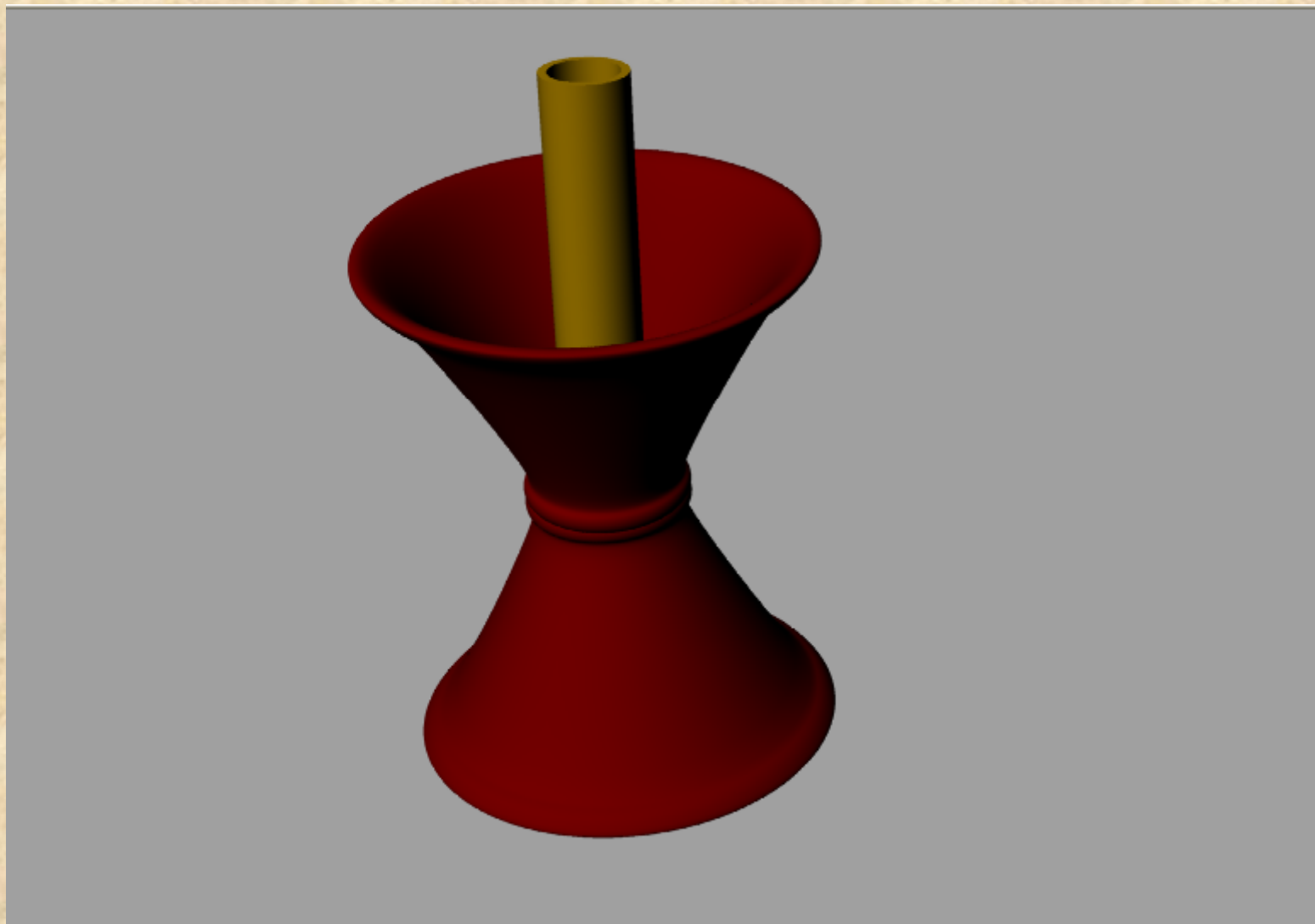
# Corvino M. – Filograna F.

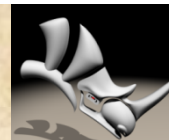
Prospettiva





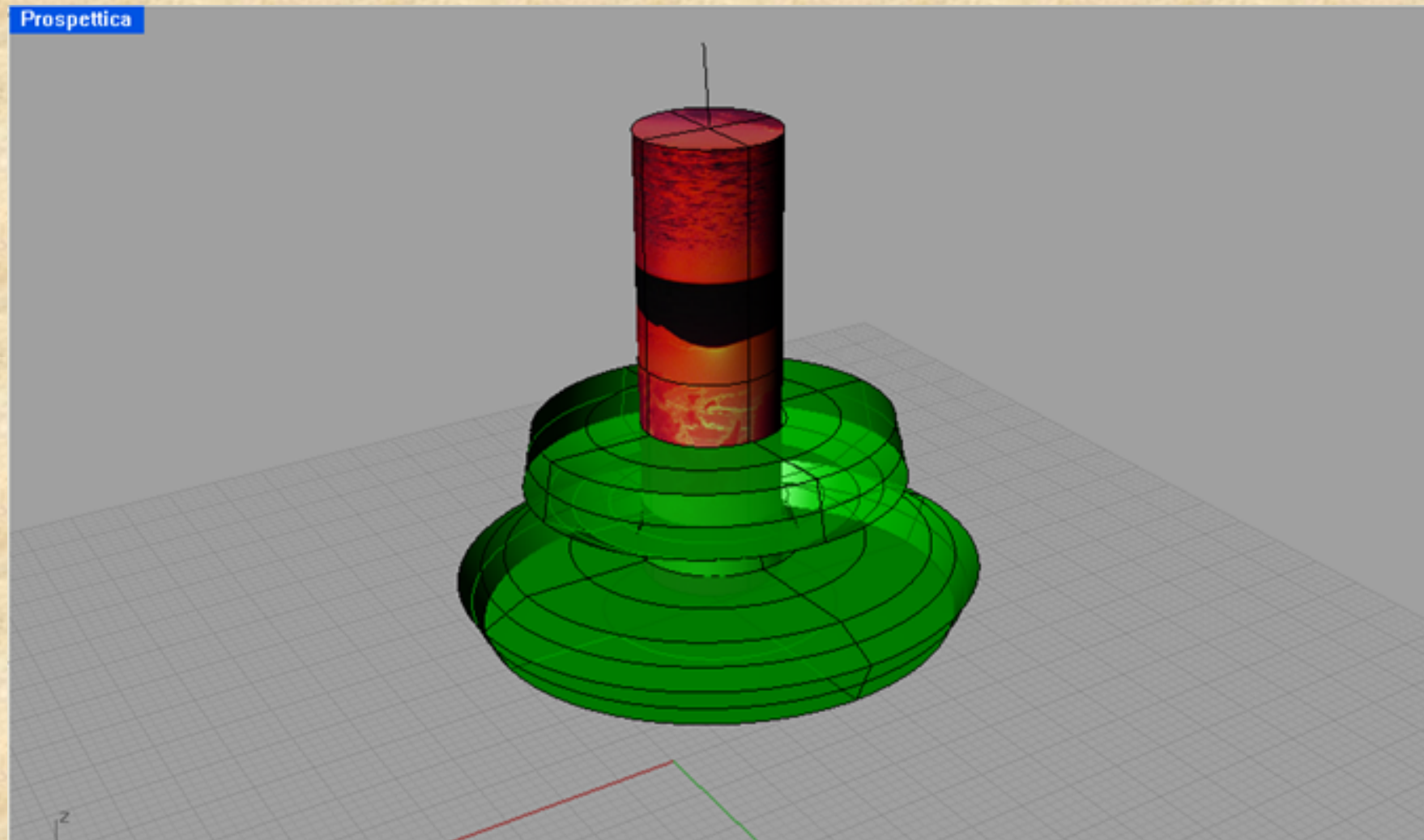
# Corvino M. – Filograna F.

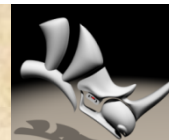




# Corvino M. – Filograna F.

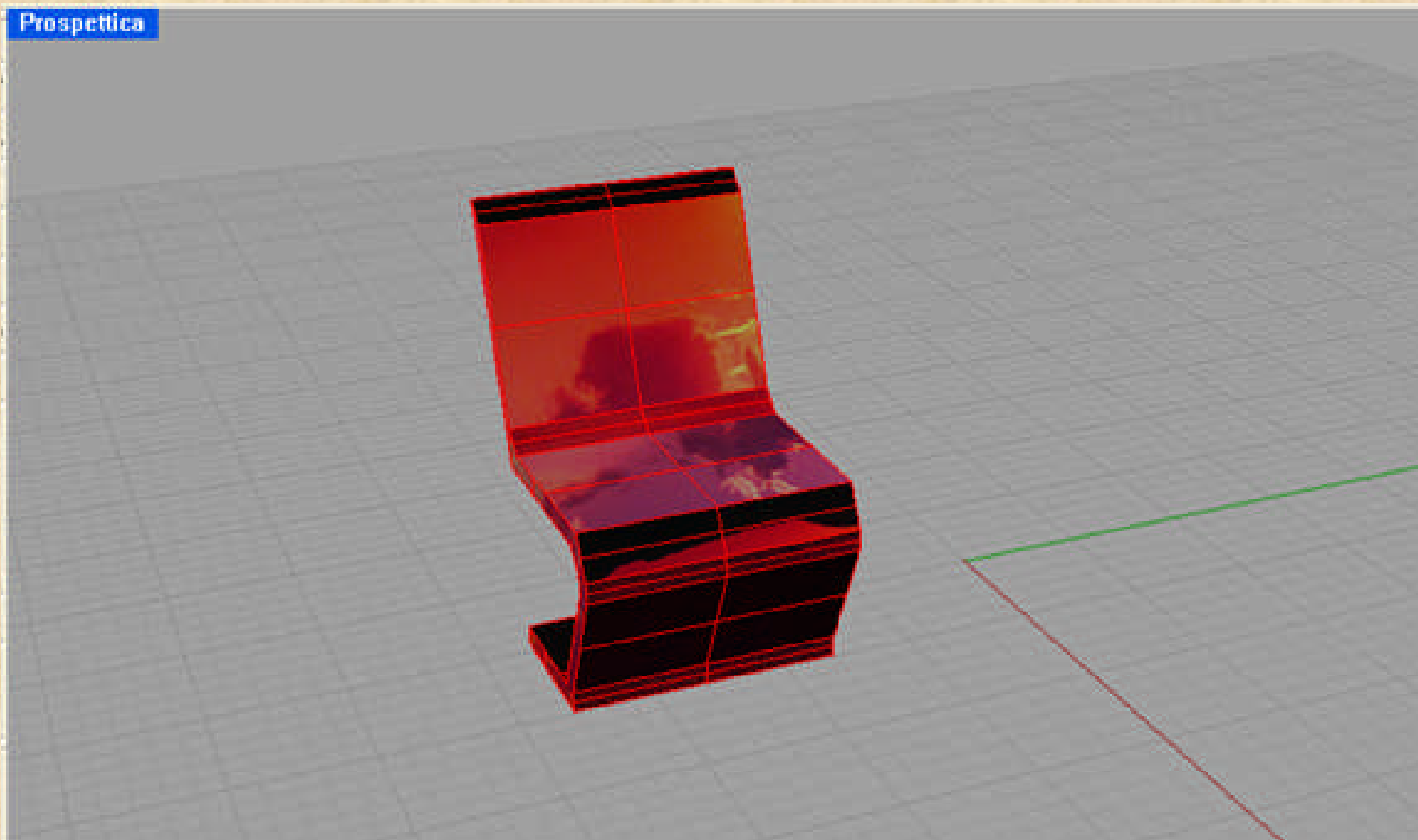
Prospettica

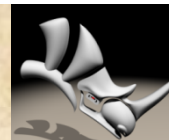




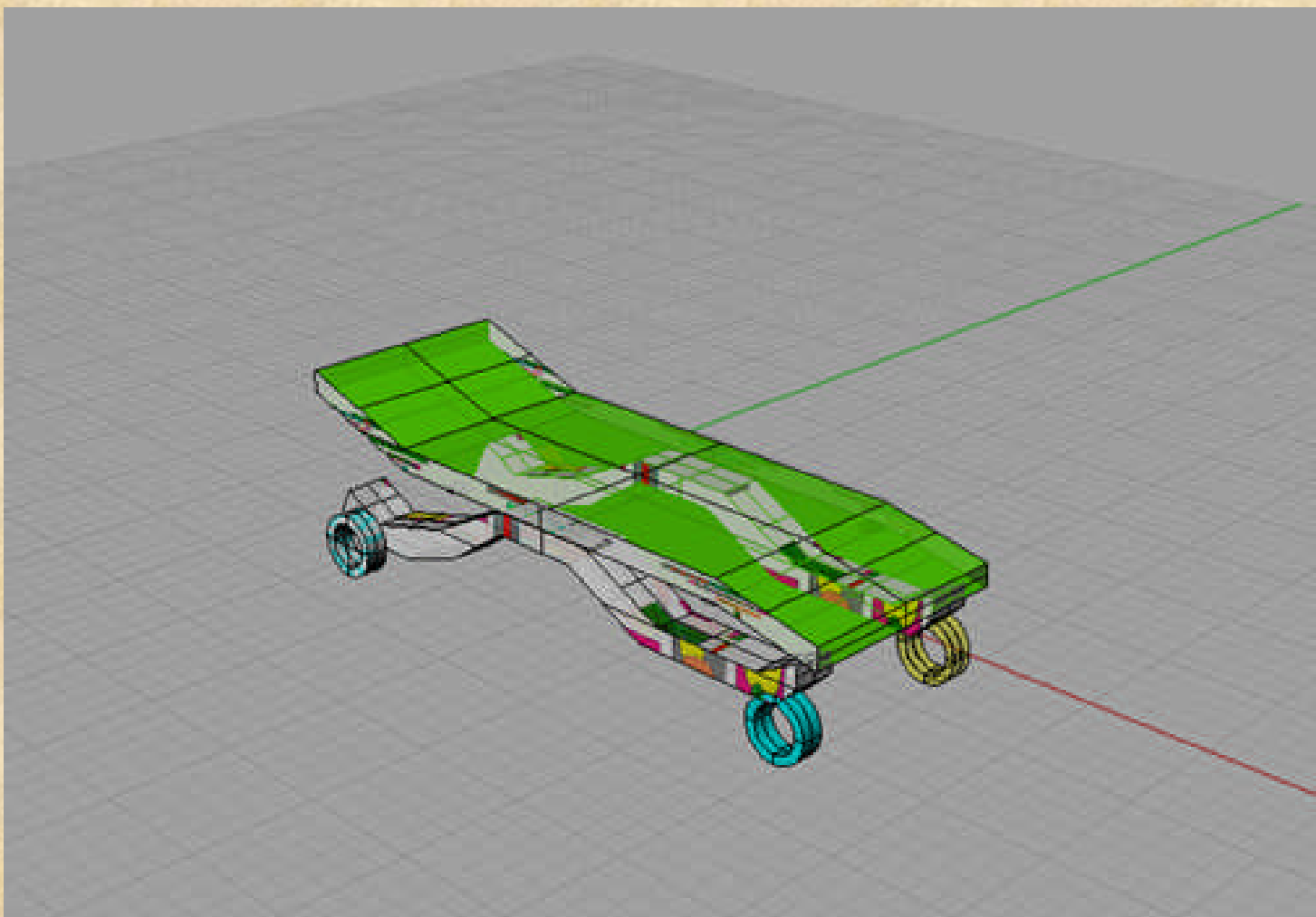
# Corvino M. – Filograna F.

Prospettiva

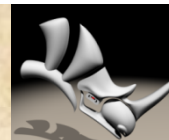




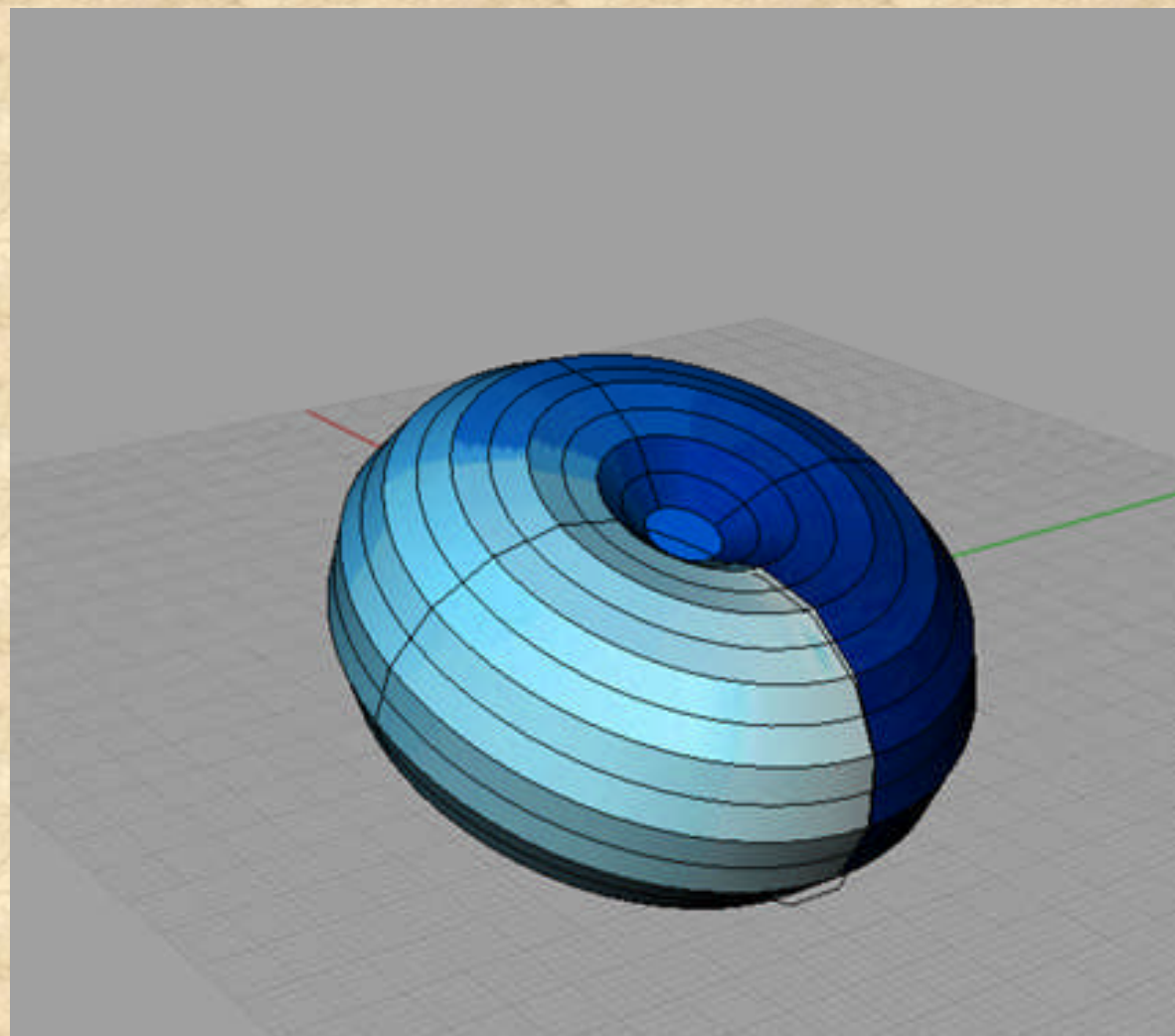
# Corvino M. – Filograna F.

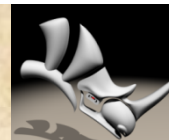




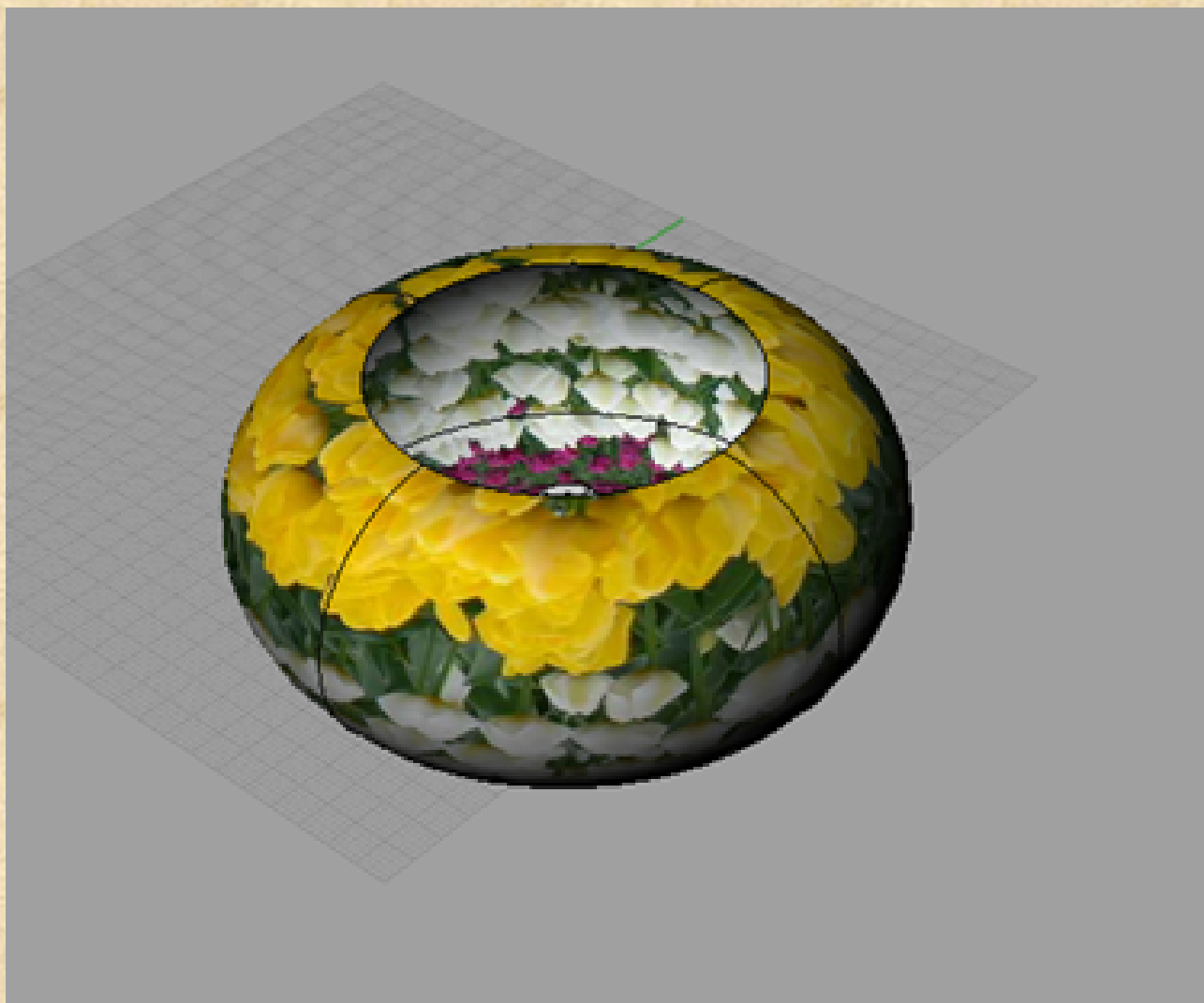


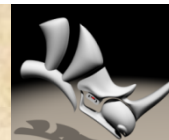
# Corvino M. – Filograna F.



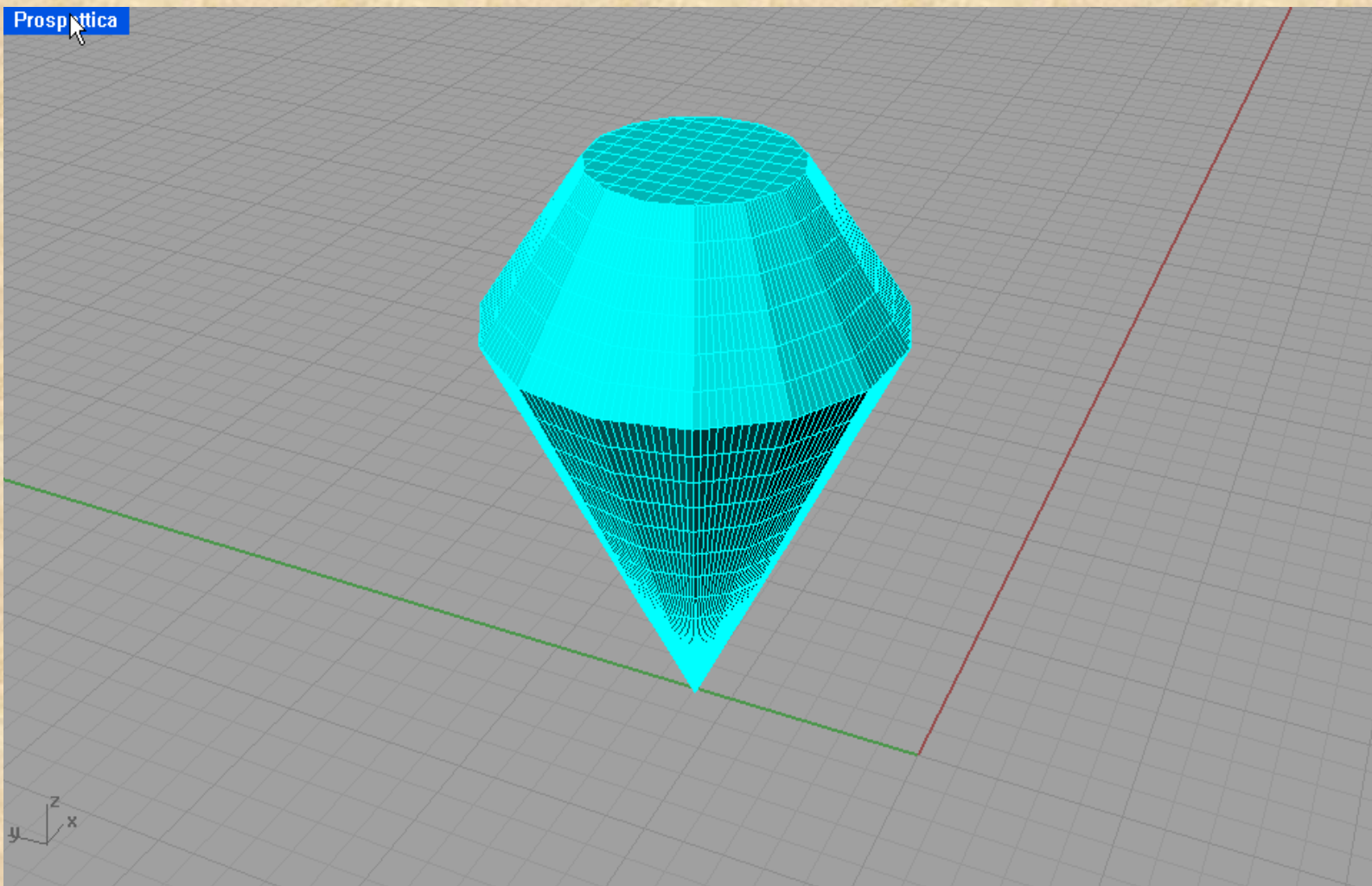


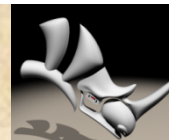
# Corvino M. – Filograna F.



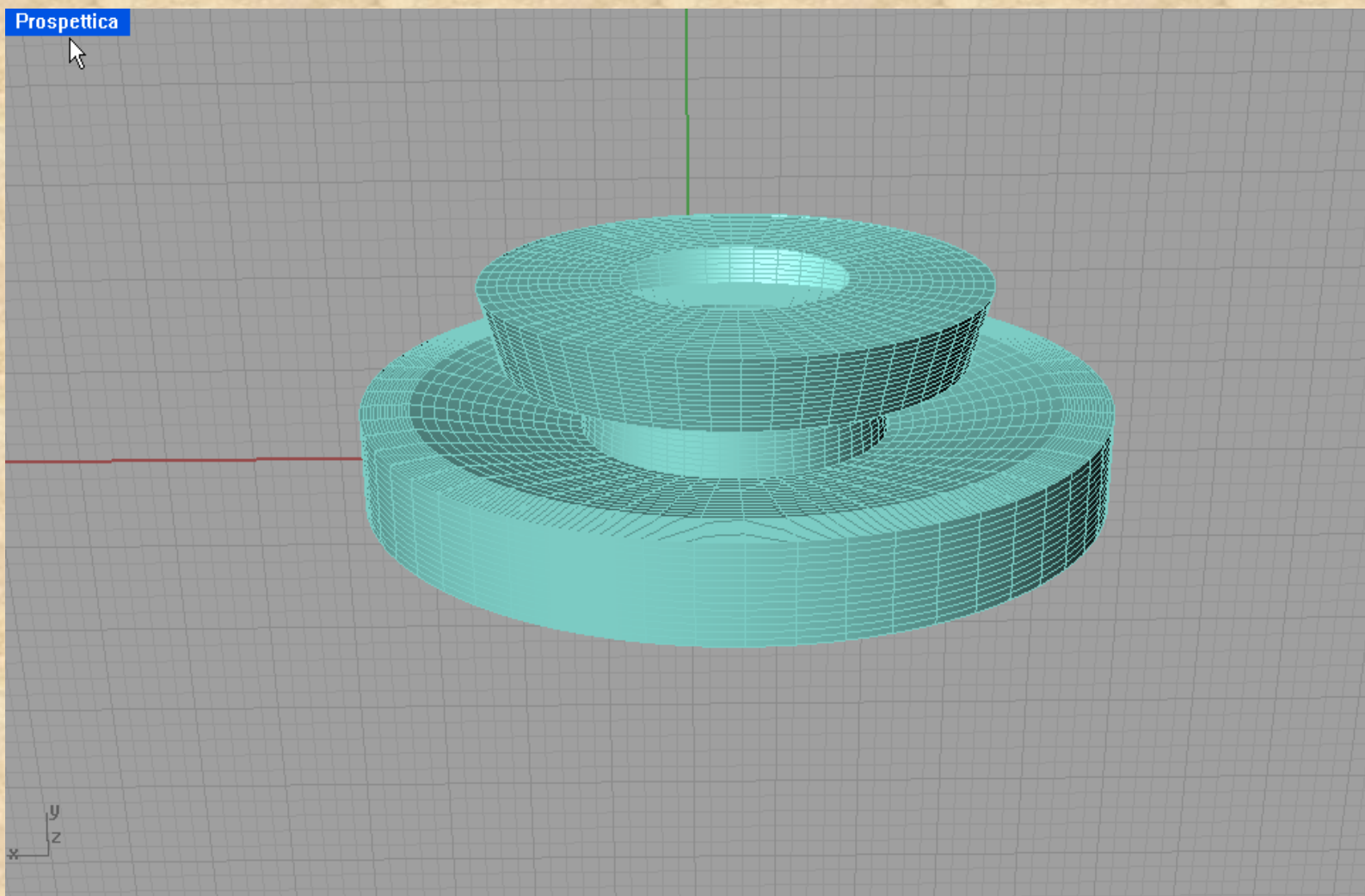


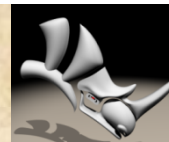
# Cisternino C. - Di Renzo S.



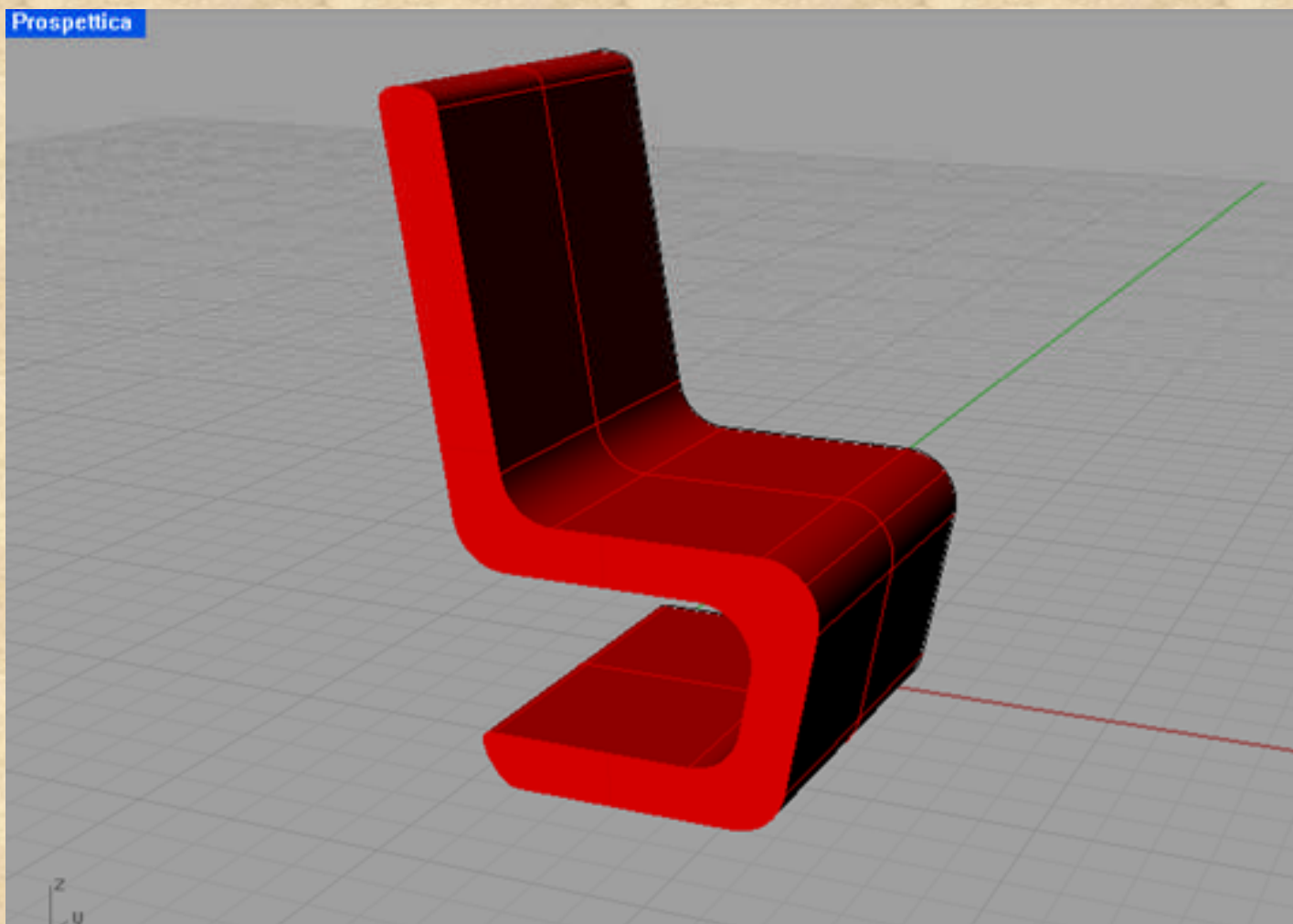


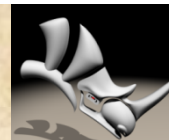
# Cisternino C. - Di Renzo S.





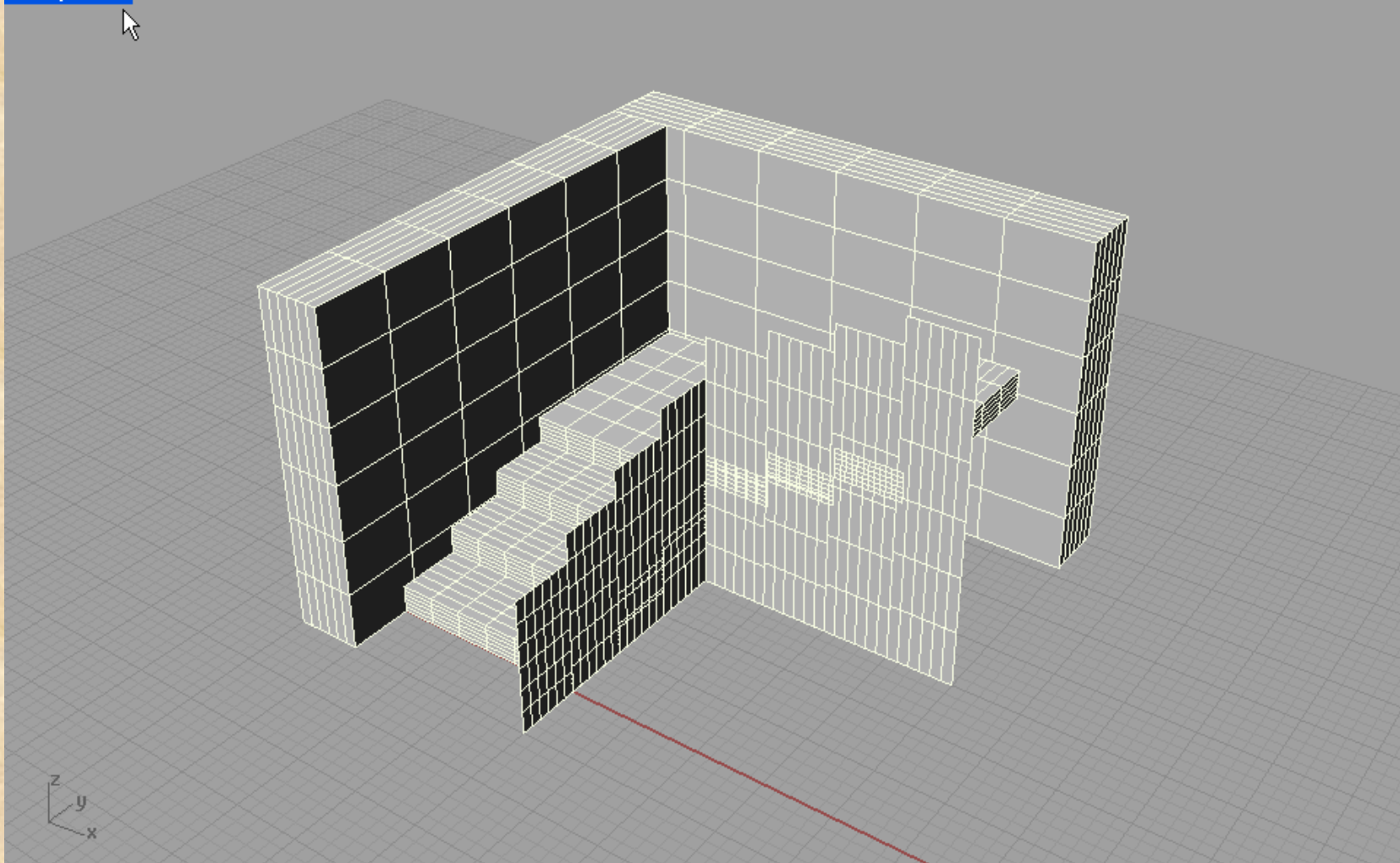
# Cisternino C. - Di Renzo S.

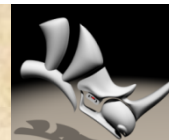




# Cisternino C. - Di Renzo S.

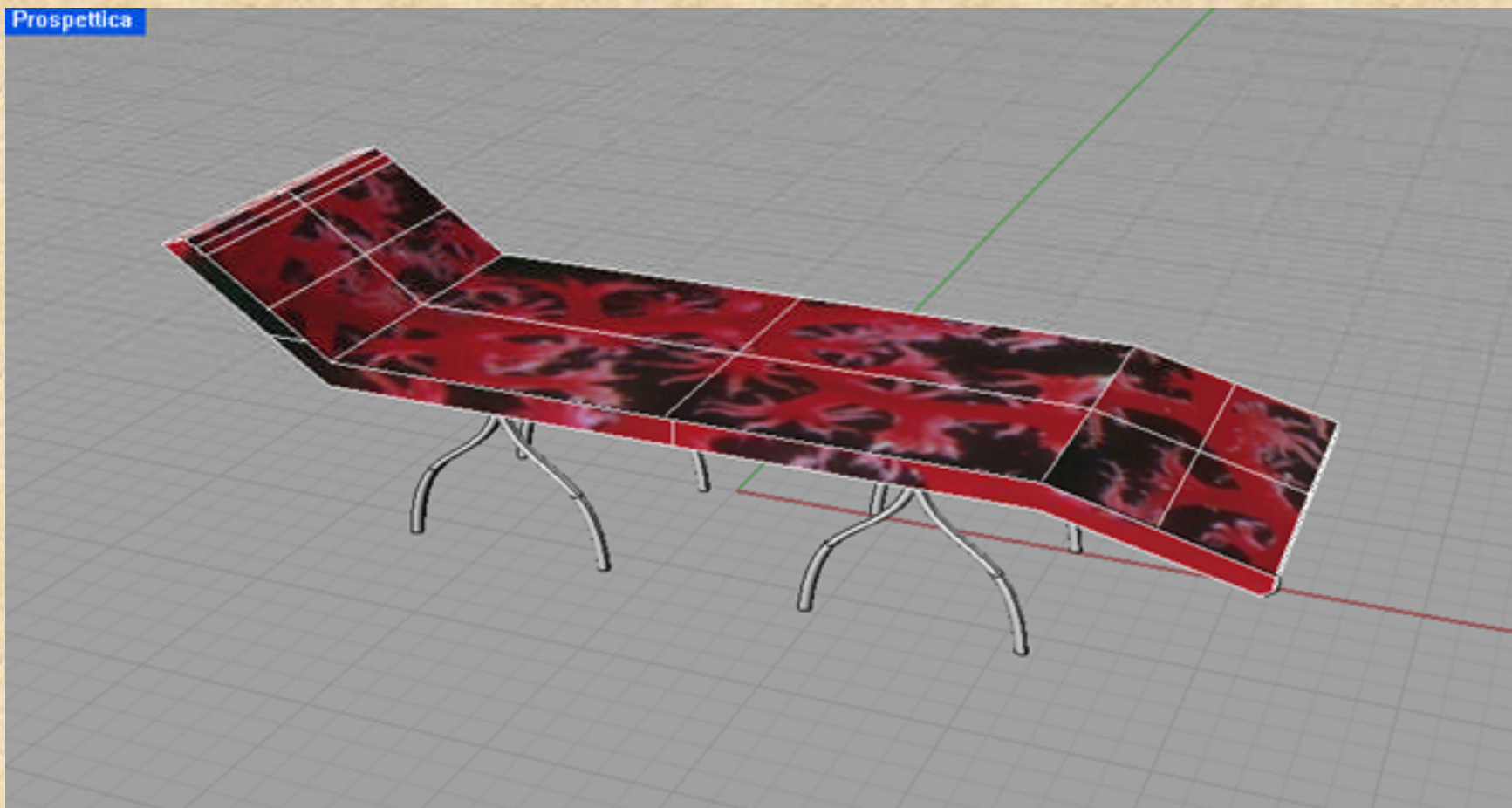
Prospettica

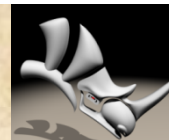




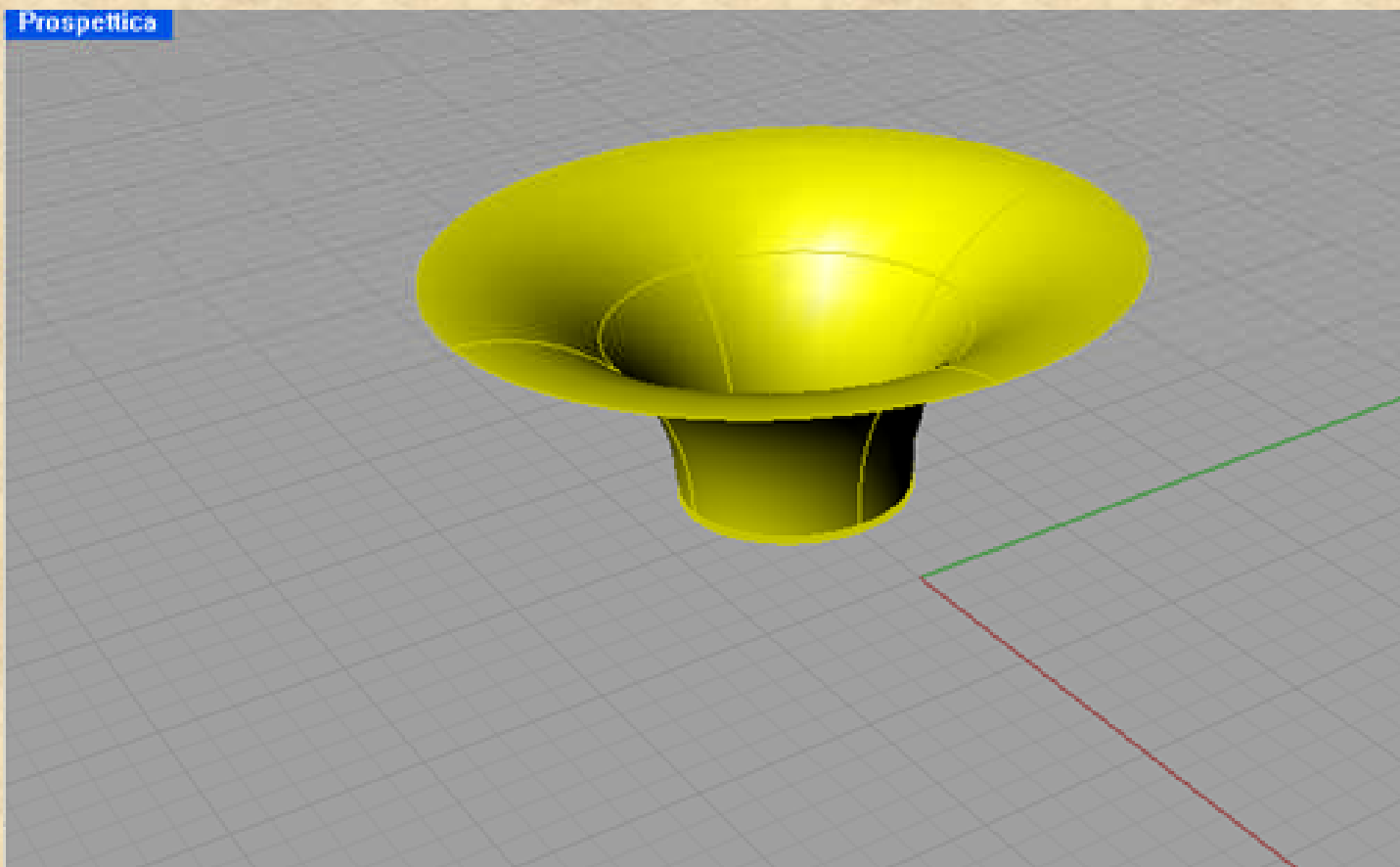
# Coppola S. - Santoiemma P.

Prospettica

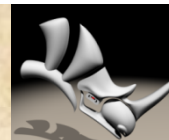




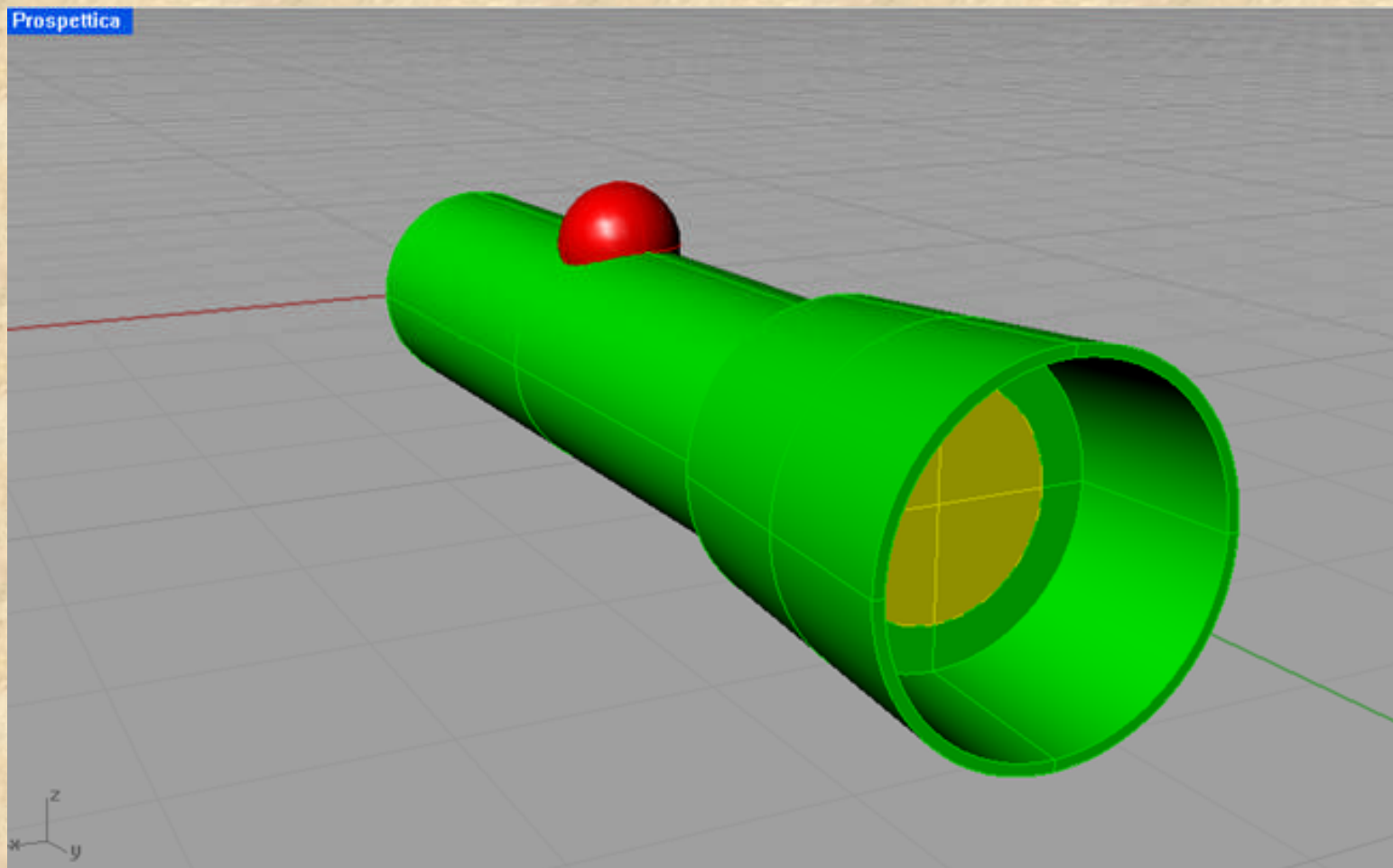
# Coppola S. - Santoiemma P.

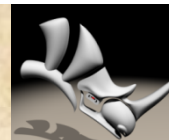






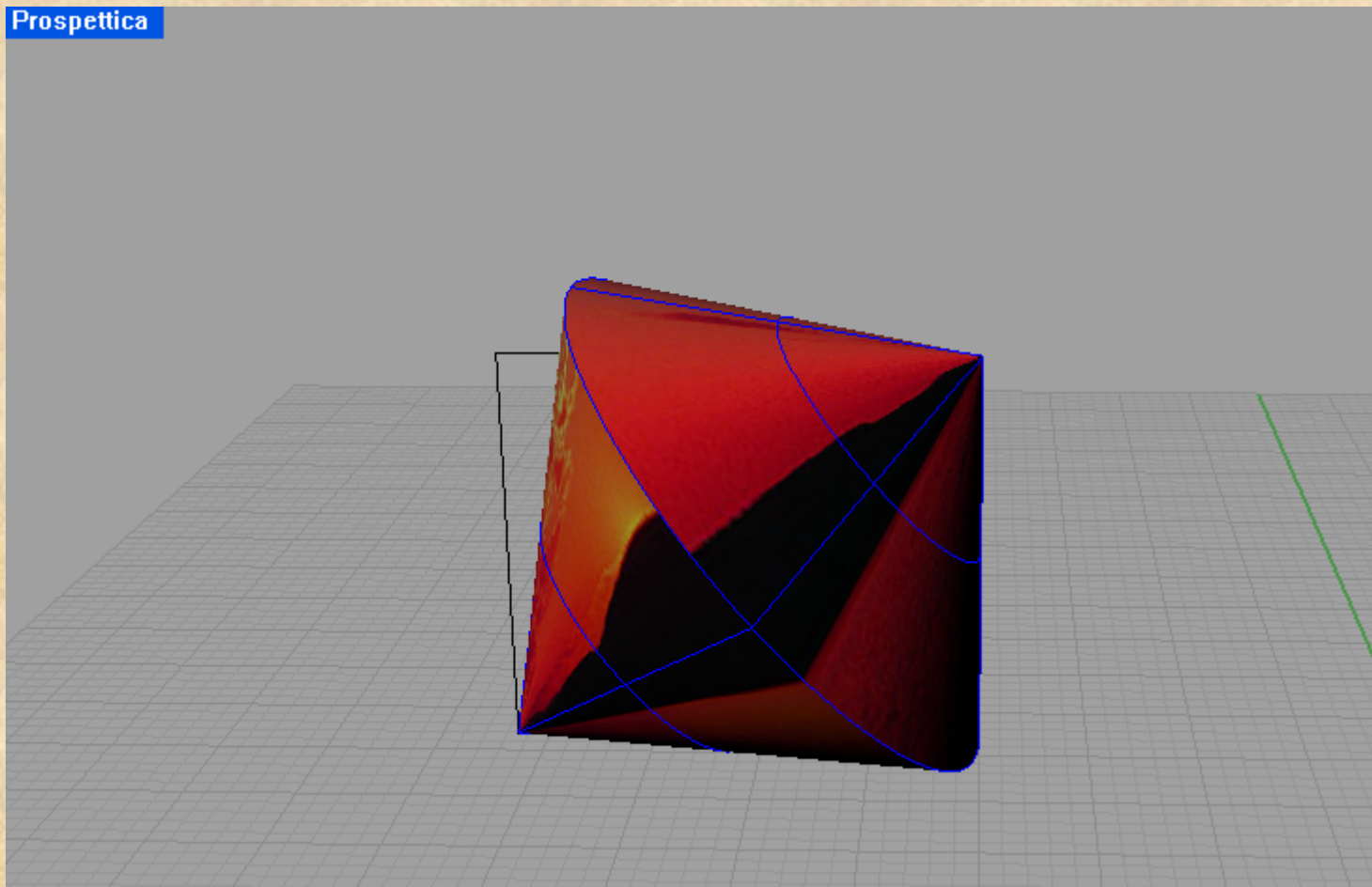
# Coppola S. - Santoiemma P.

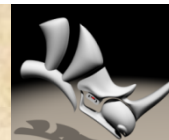




# Coppola S. - Santoiemma P.

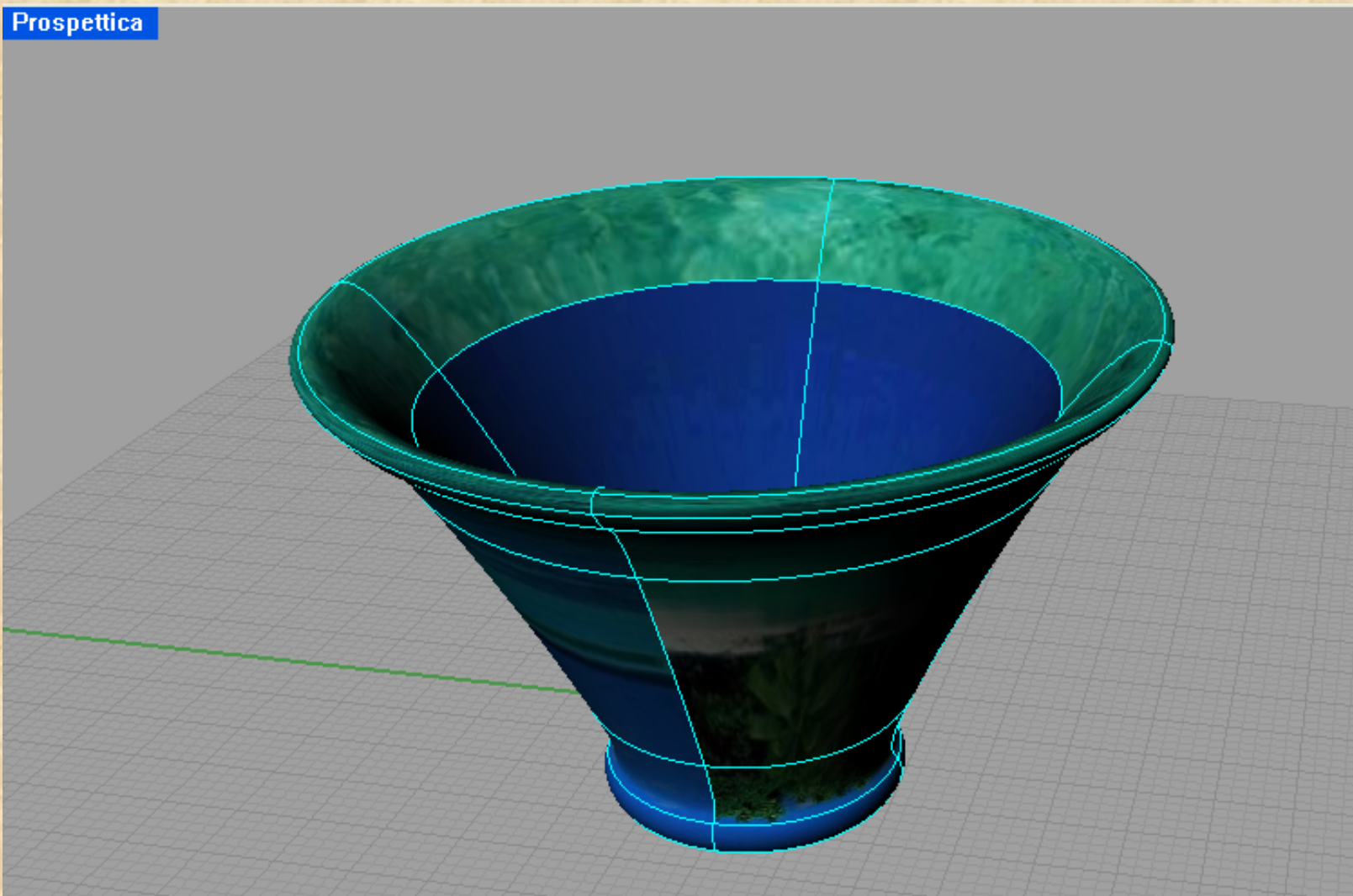
Prospettica

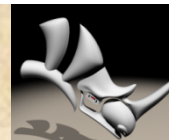




# Coppola S. - Santoiemma P.

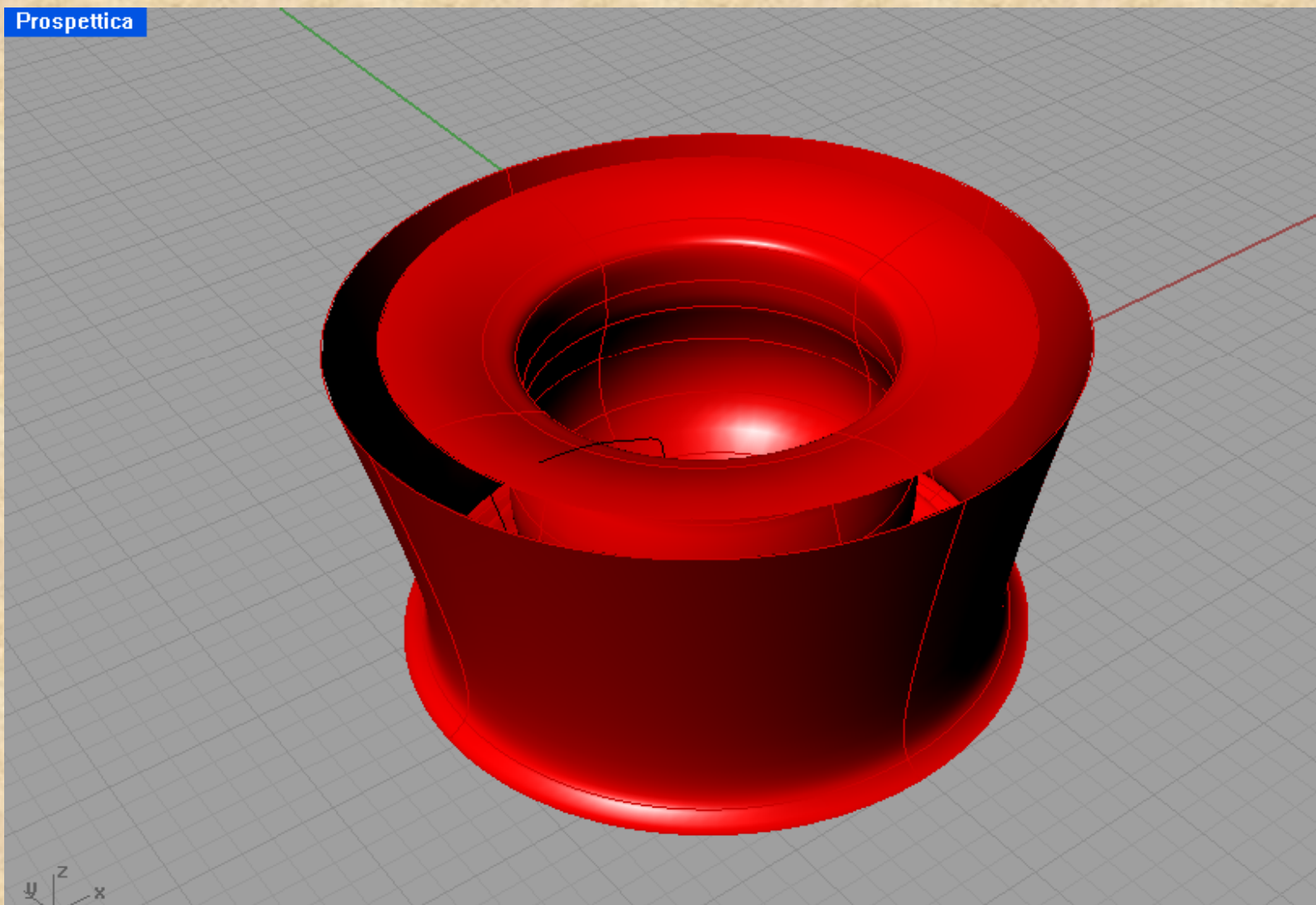
Prospettica

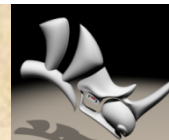




# Coppola S. - Santoiemma P.

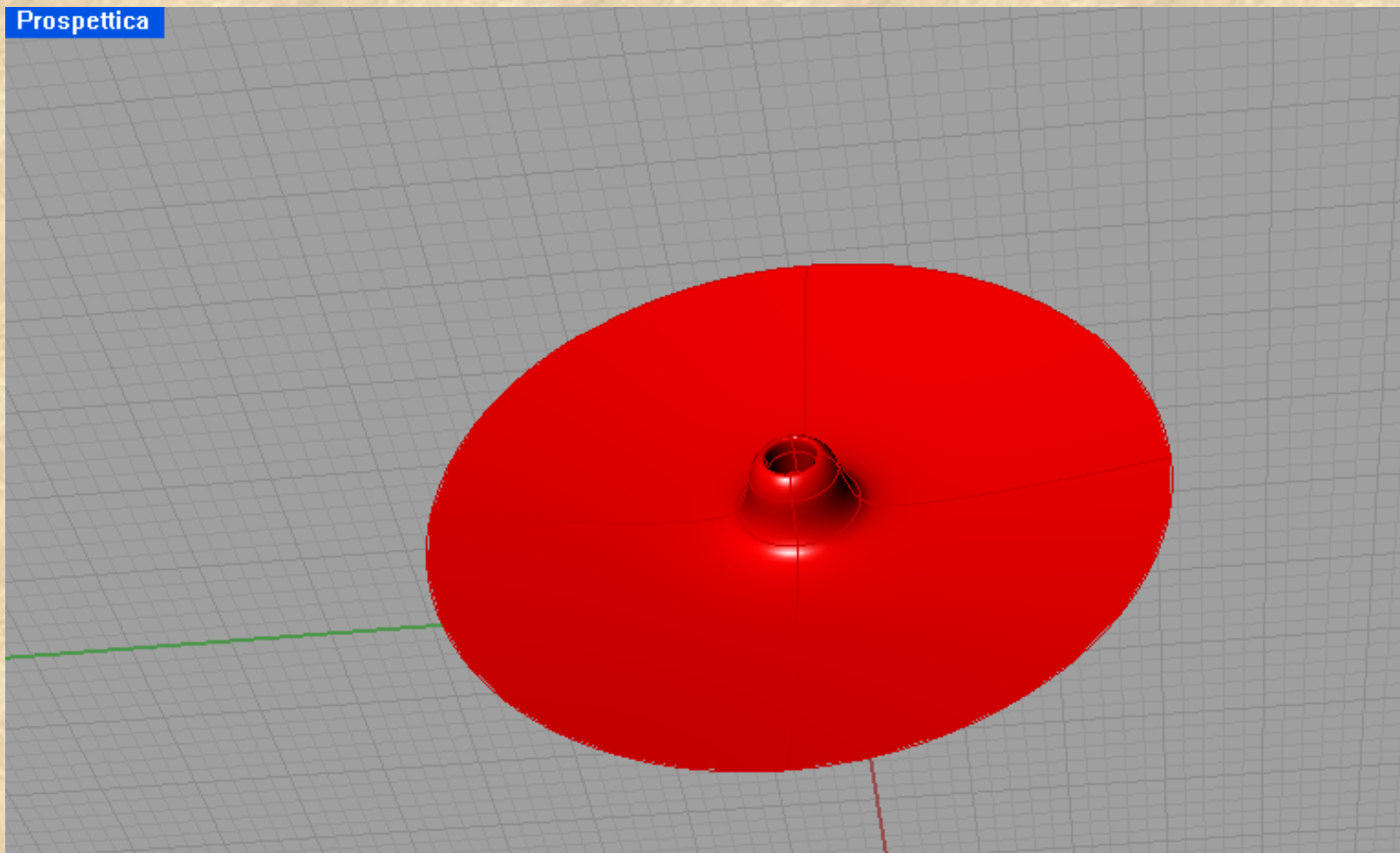
Prospettica

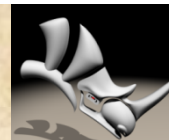




# Coppola S. - Santoiemma P.

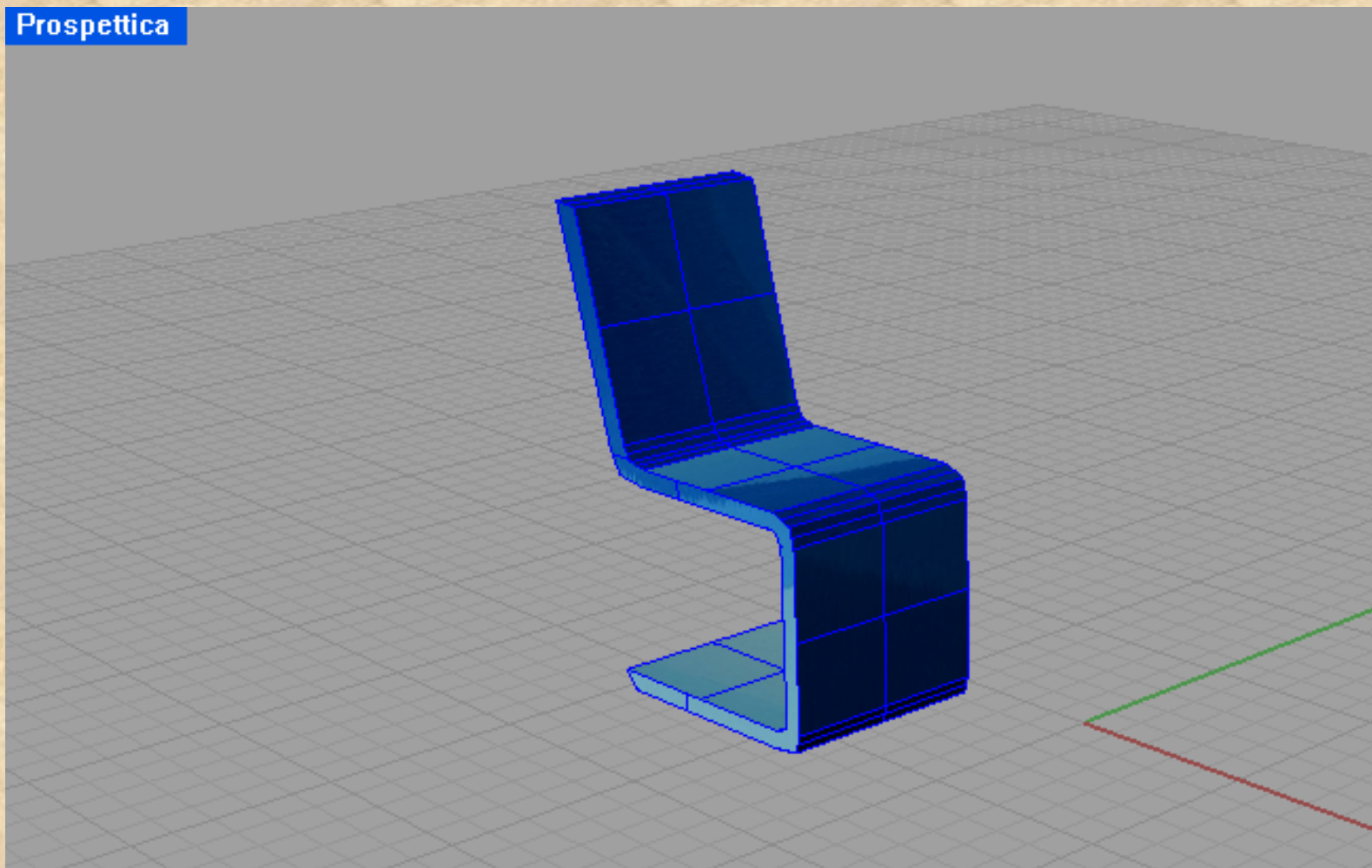
Prospettica

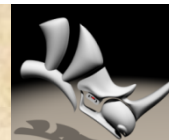




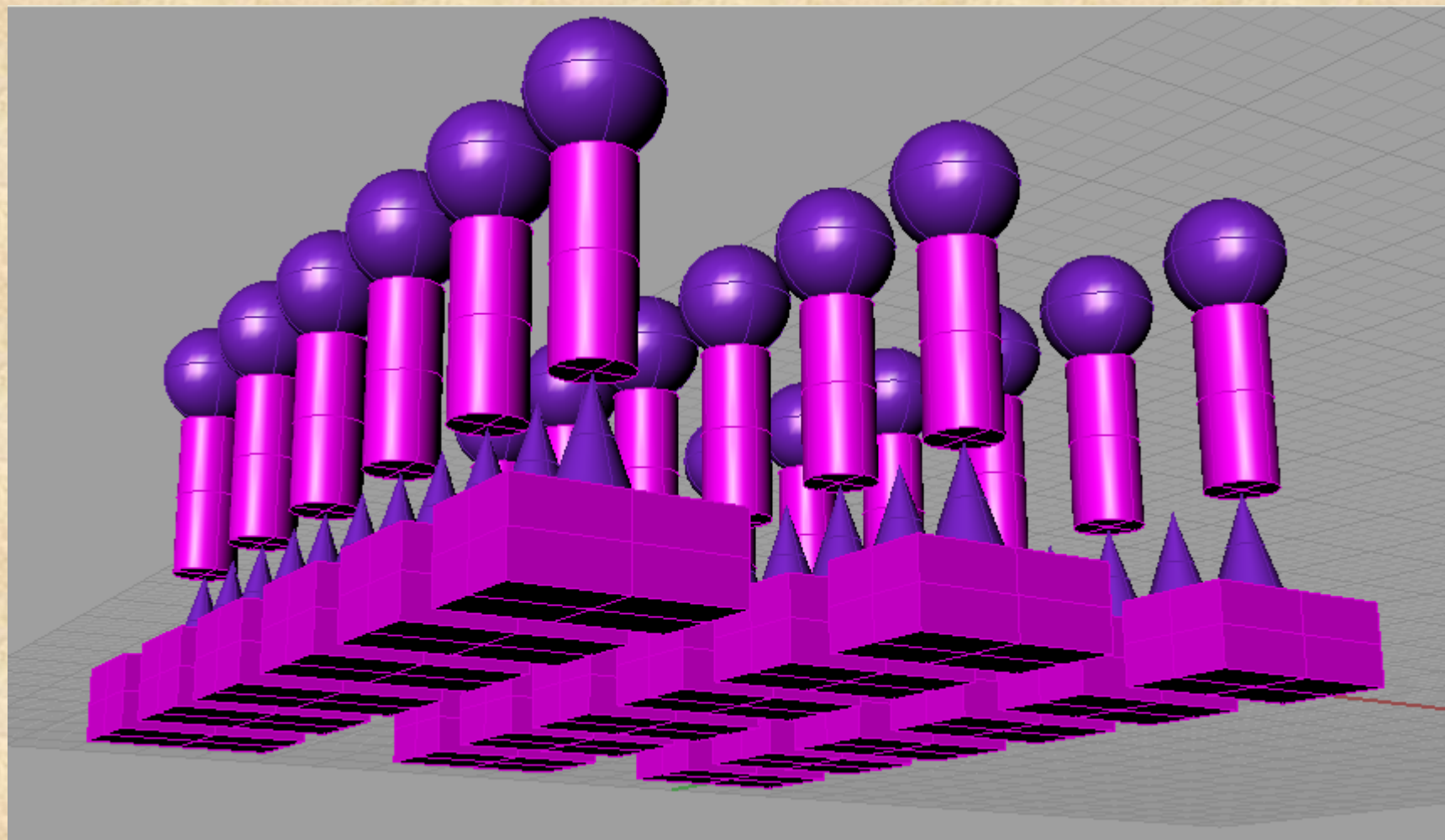
# Coppola S. - Santoiemma P.

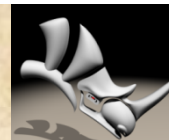
Prospettica



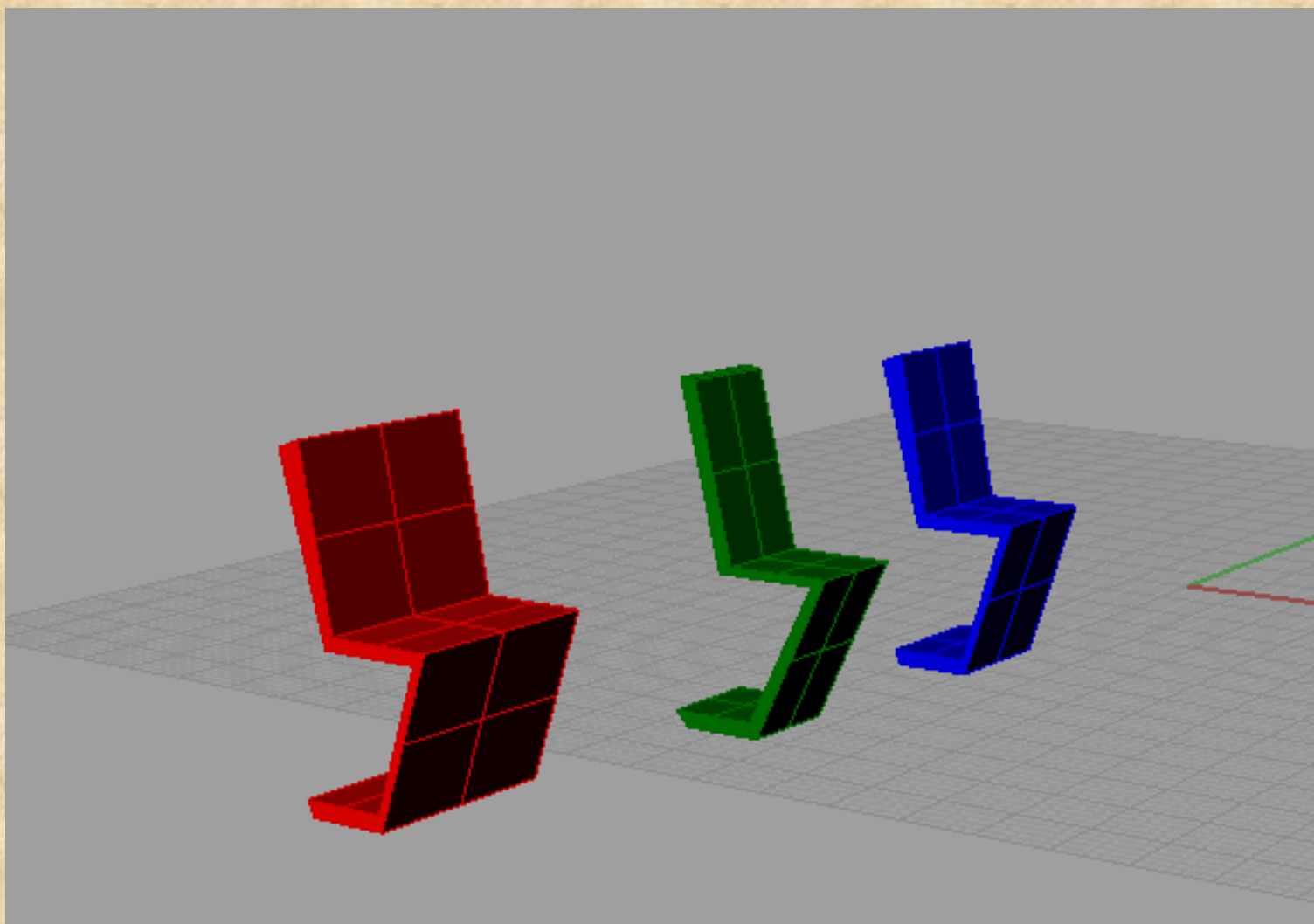


# Mariano S. – Potenza A.

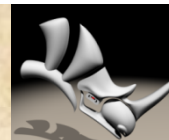




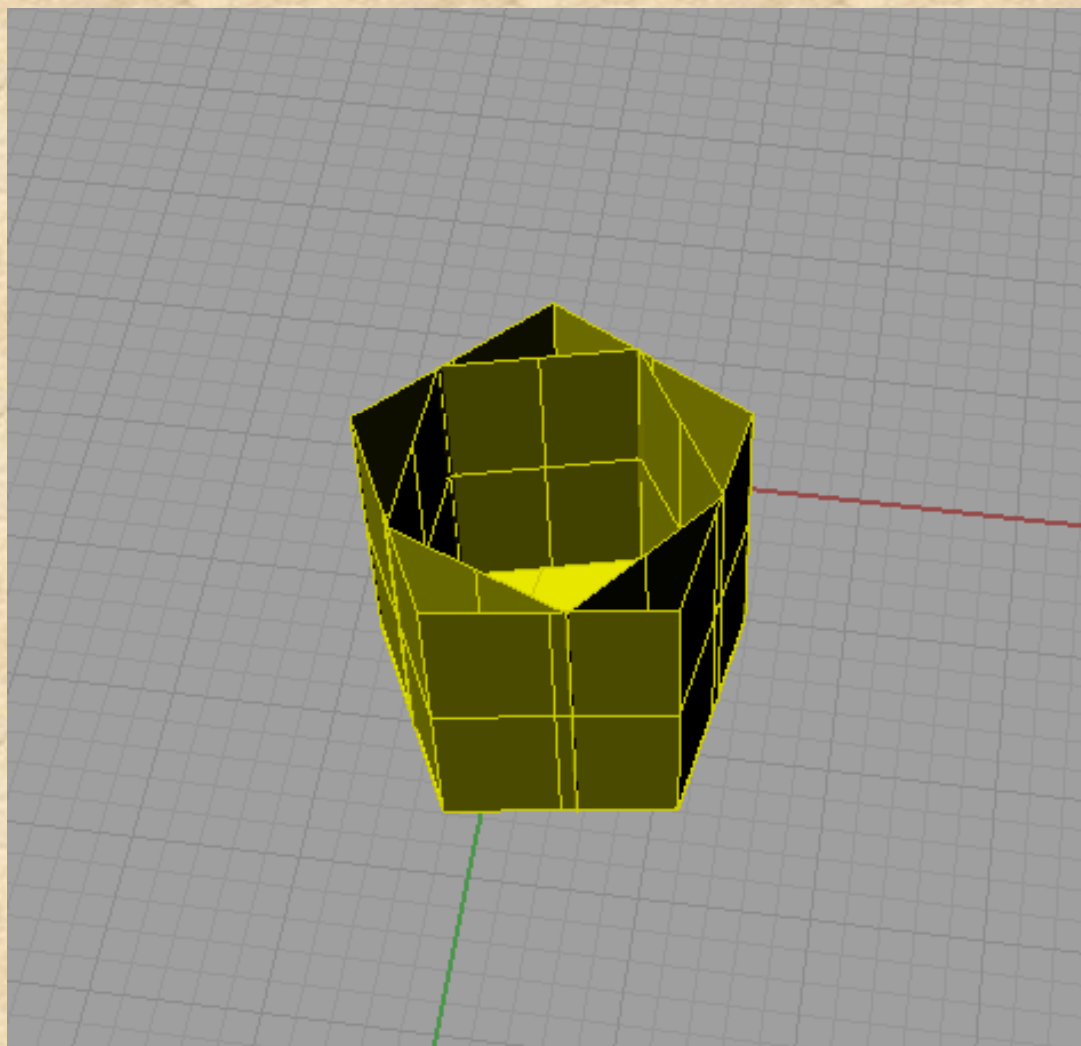
# Mariano S. – Potenza A.

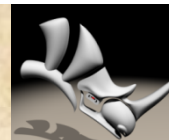






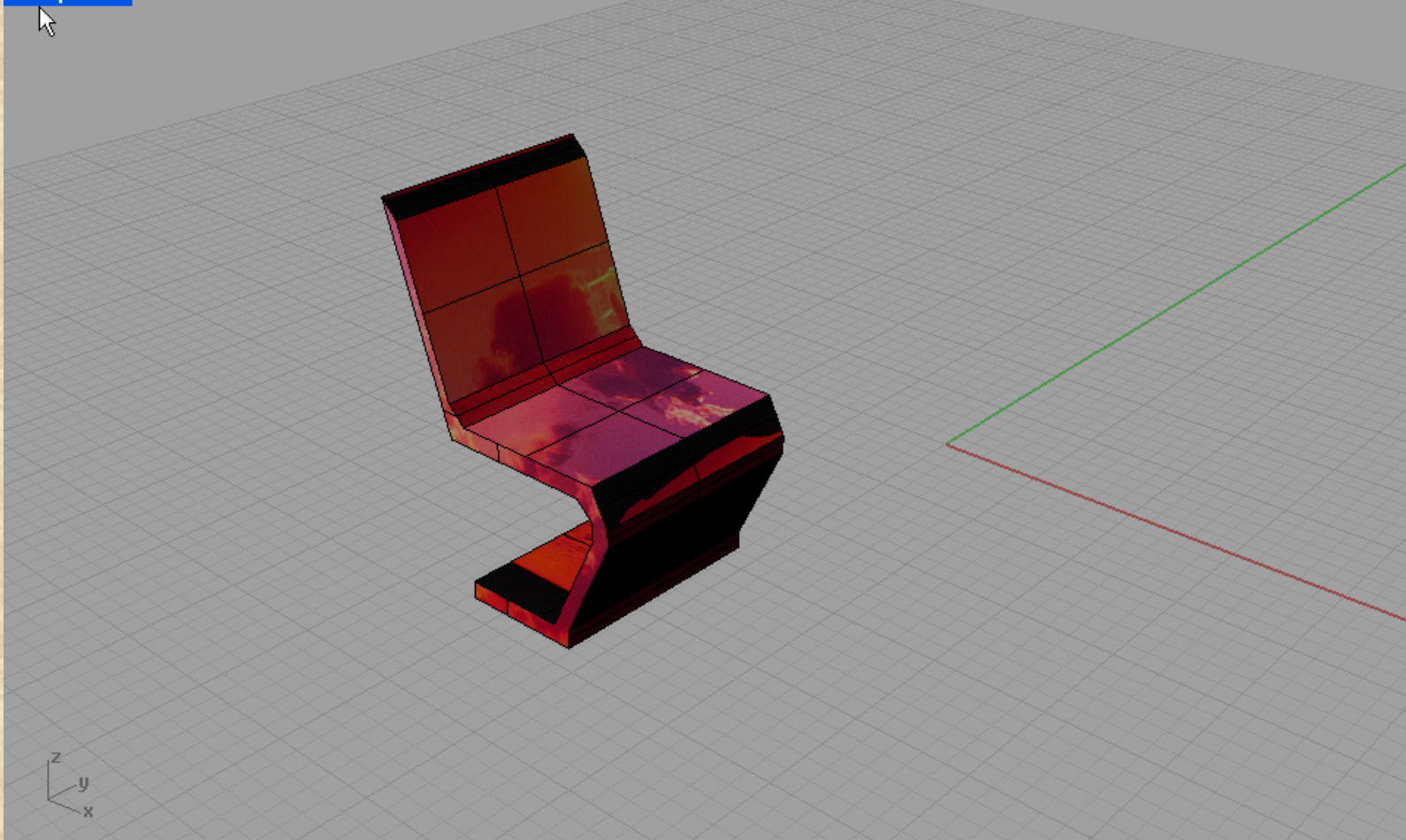
# Mariano S. – Potenza A.

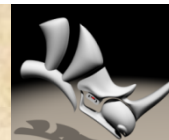




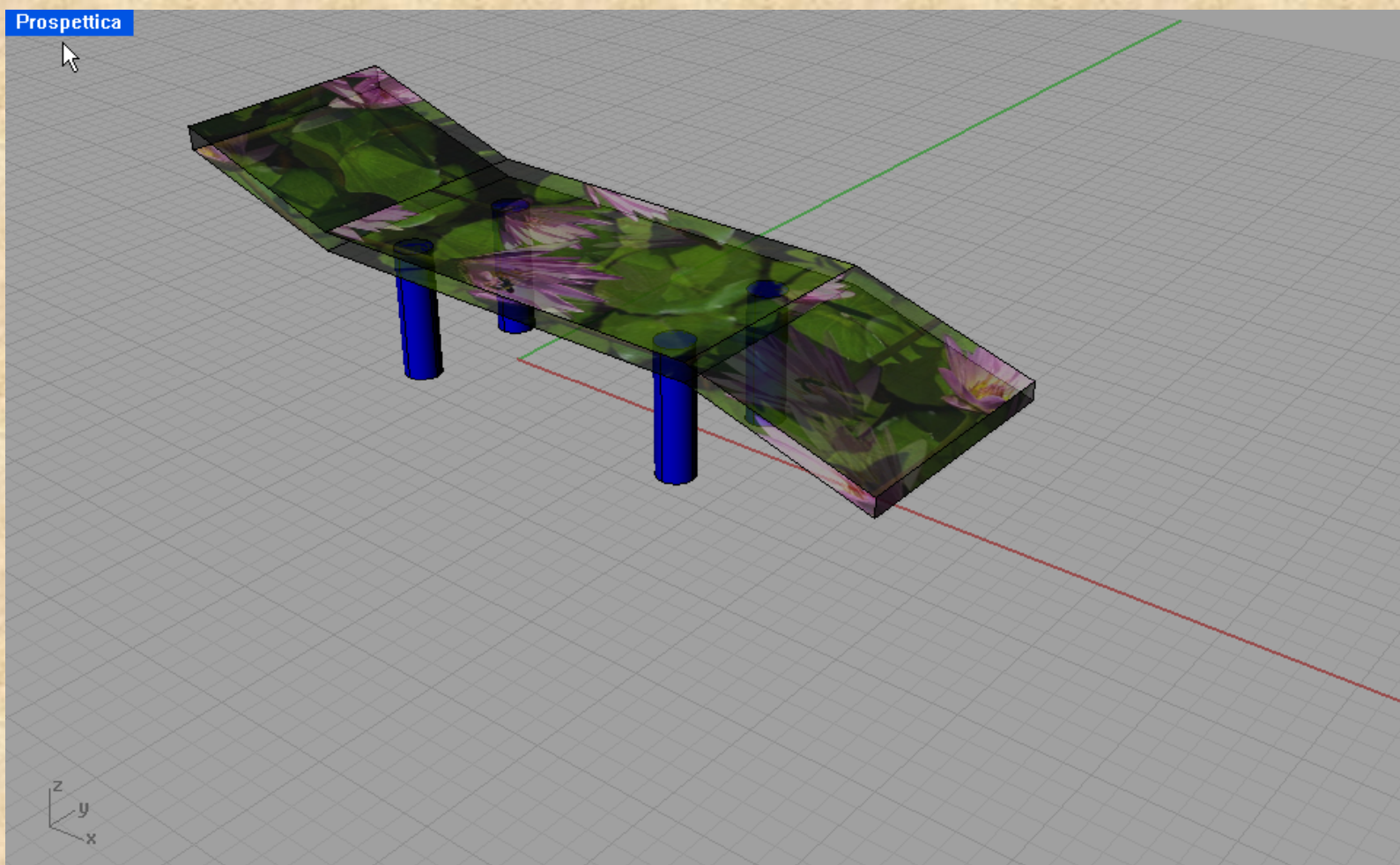
# De Vivo V.

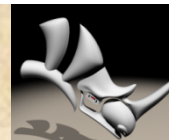
Prospettica





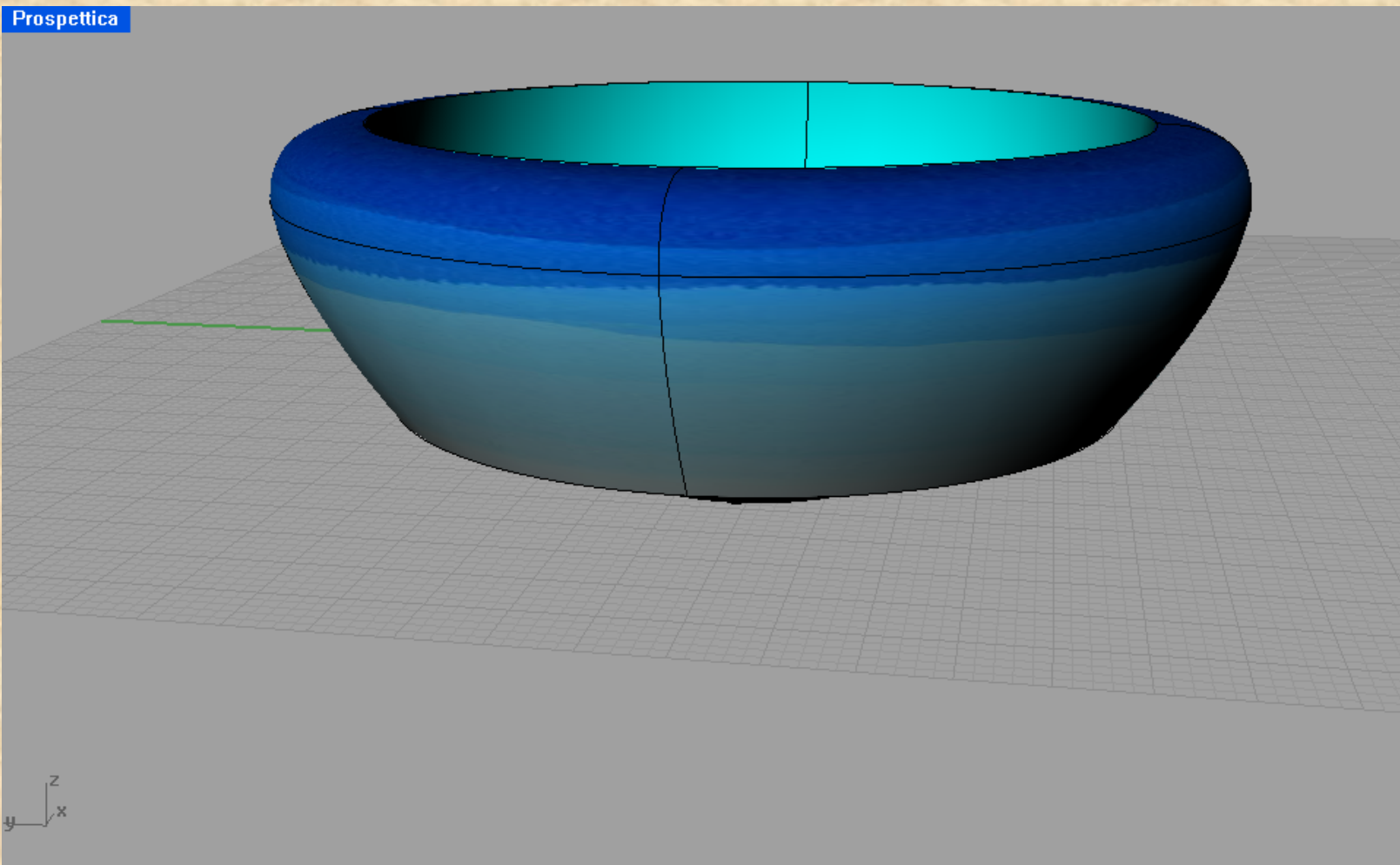
# De Vivo V.

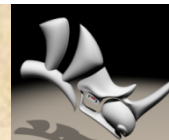




# De Vivo V.

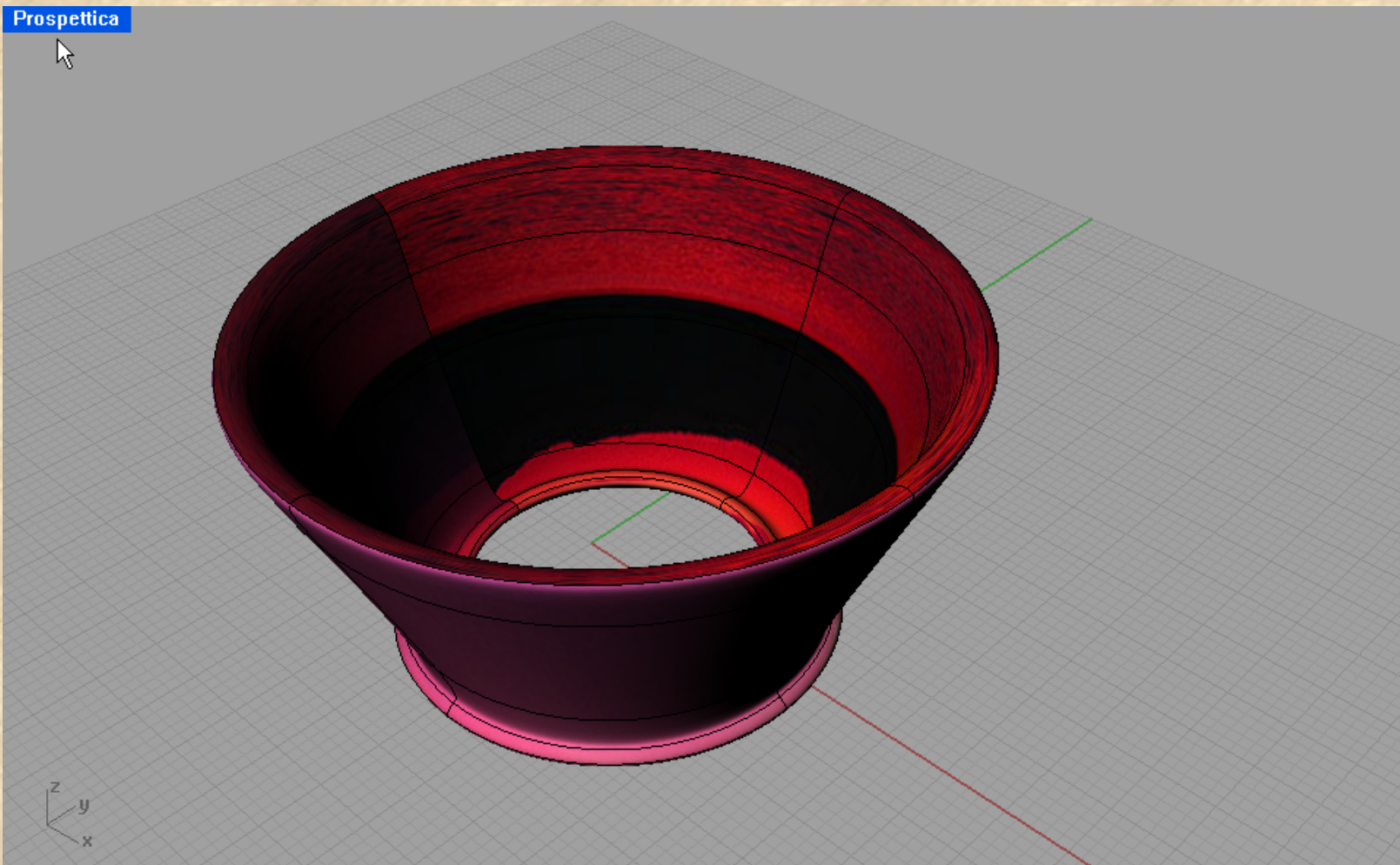
Prospettica

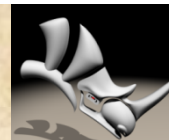




# De Vivo V.

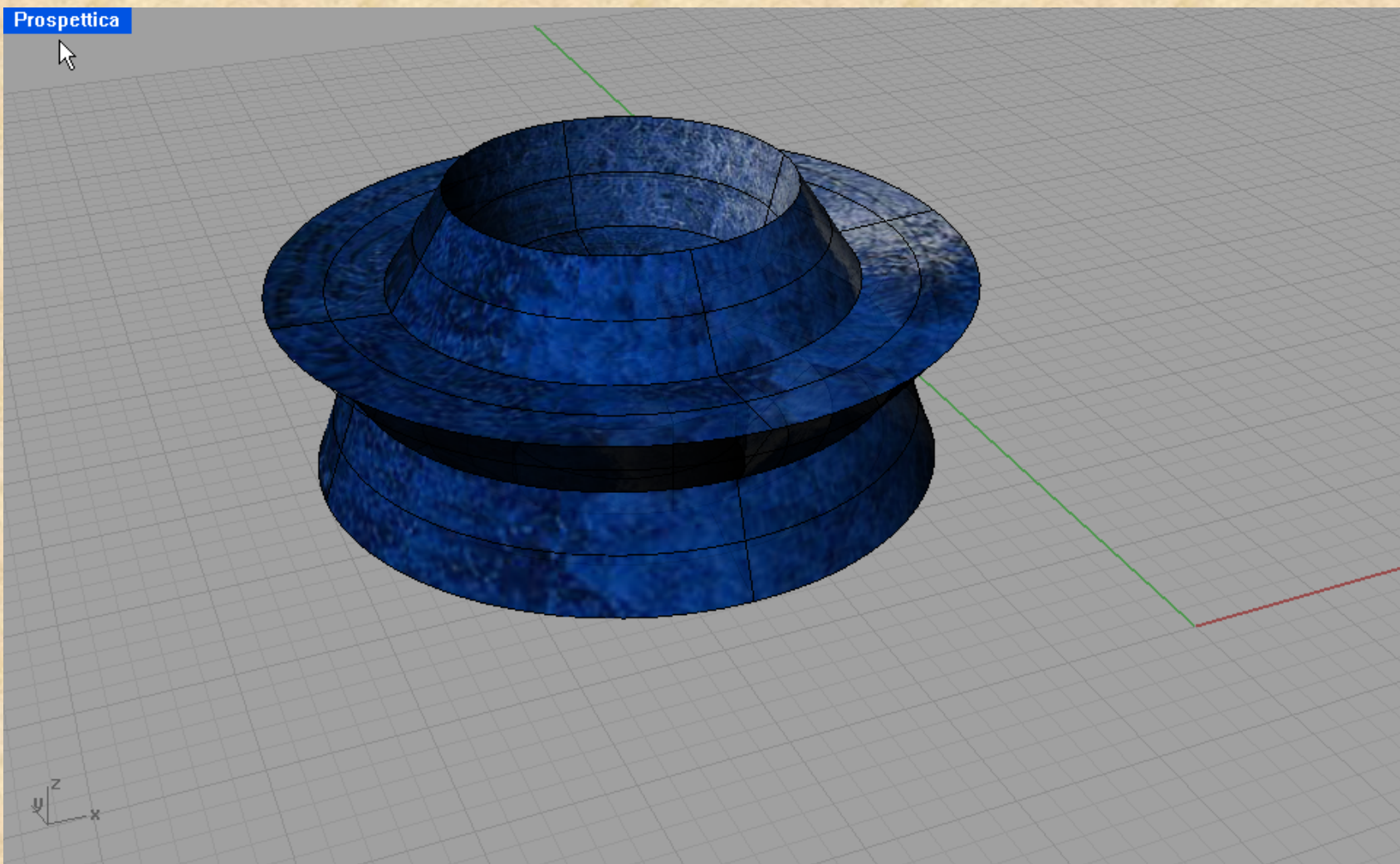
Prospettica

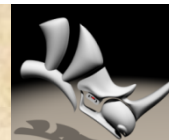




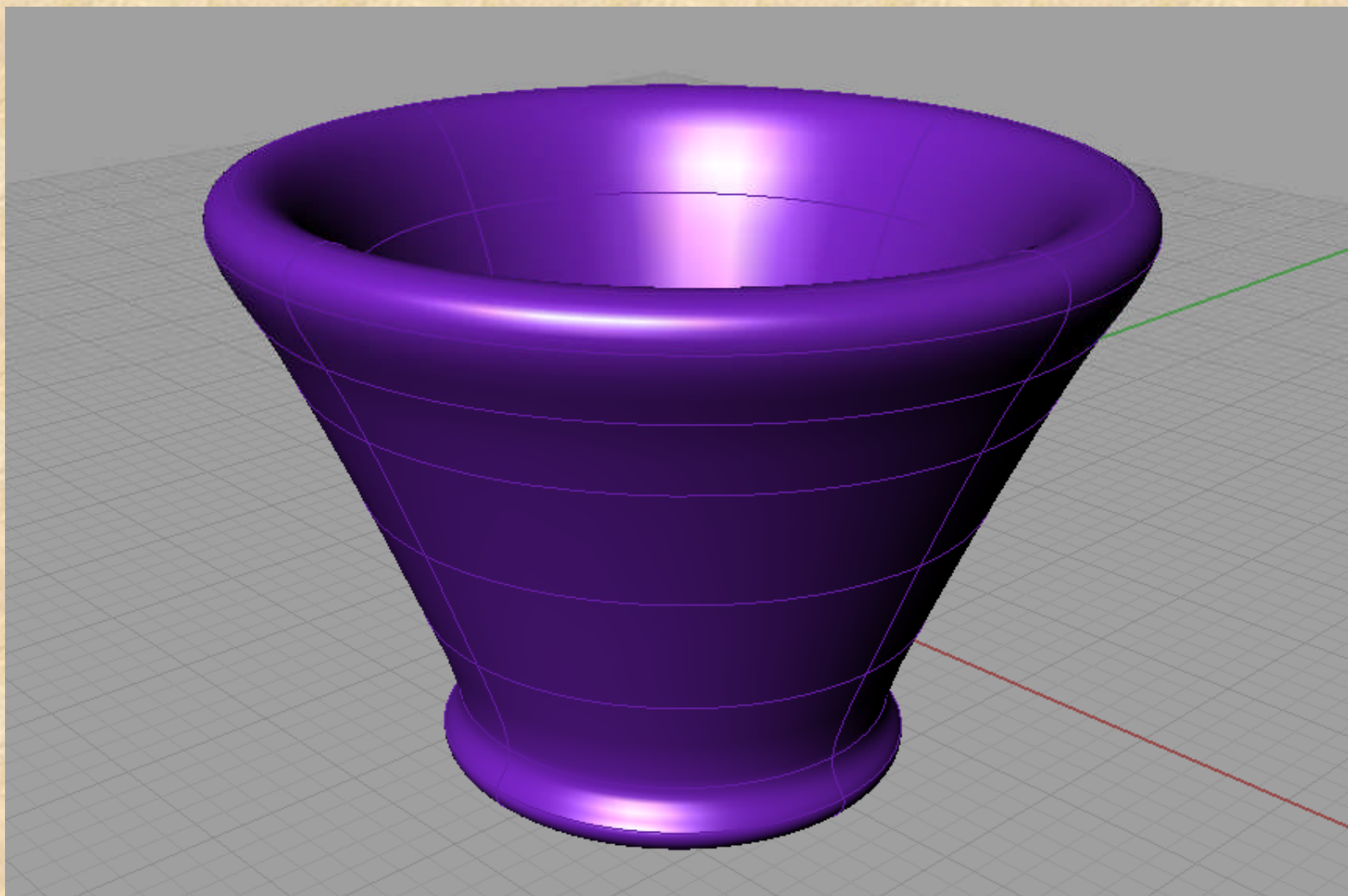
# De Vivo V.

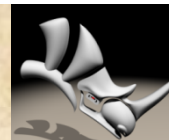
Prospettica



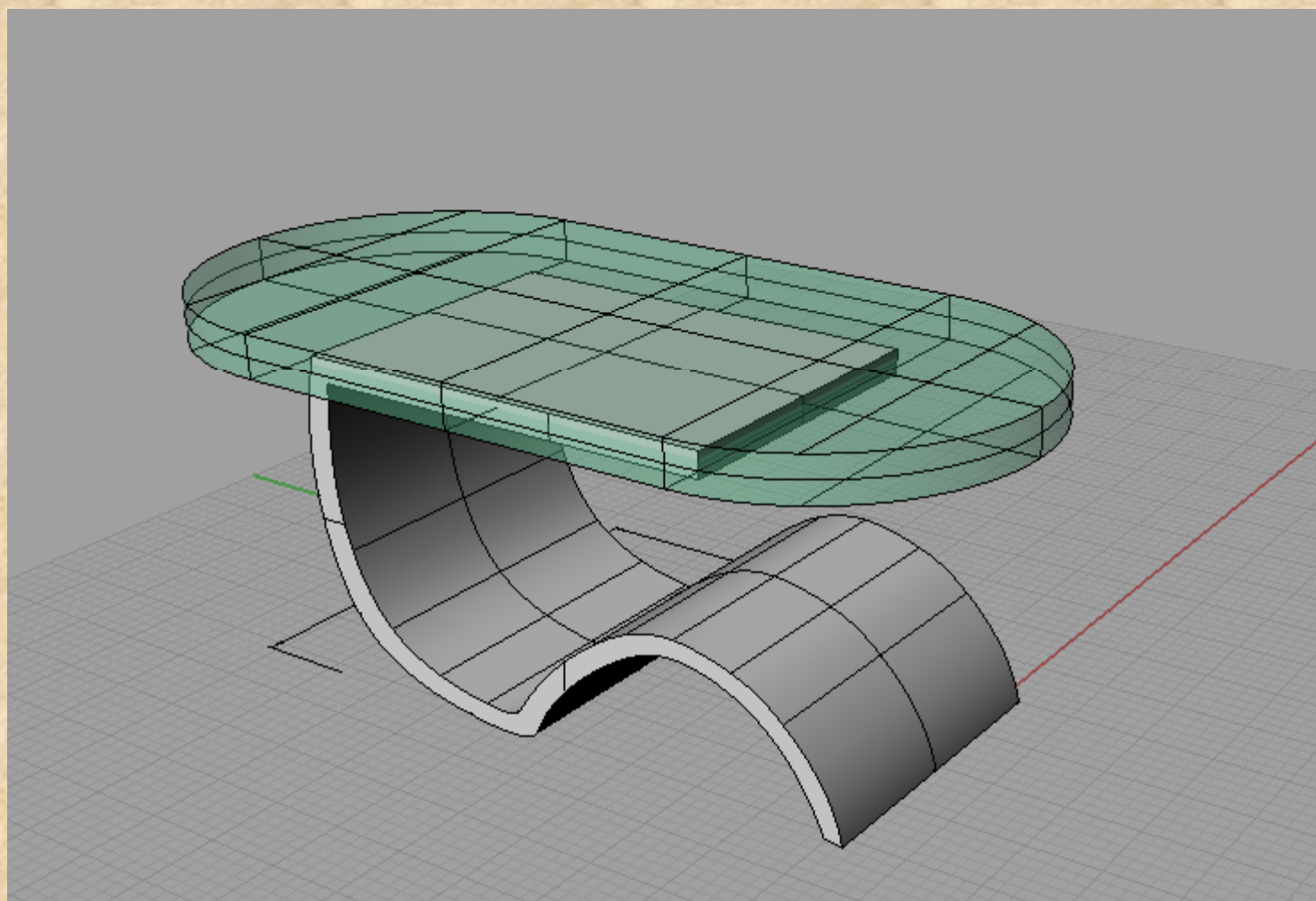


# Petrachi S. – Pellegrino R.

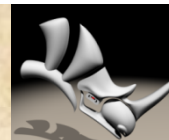




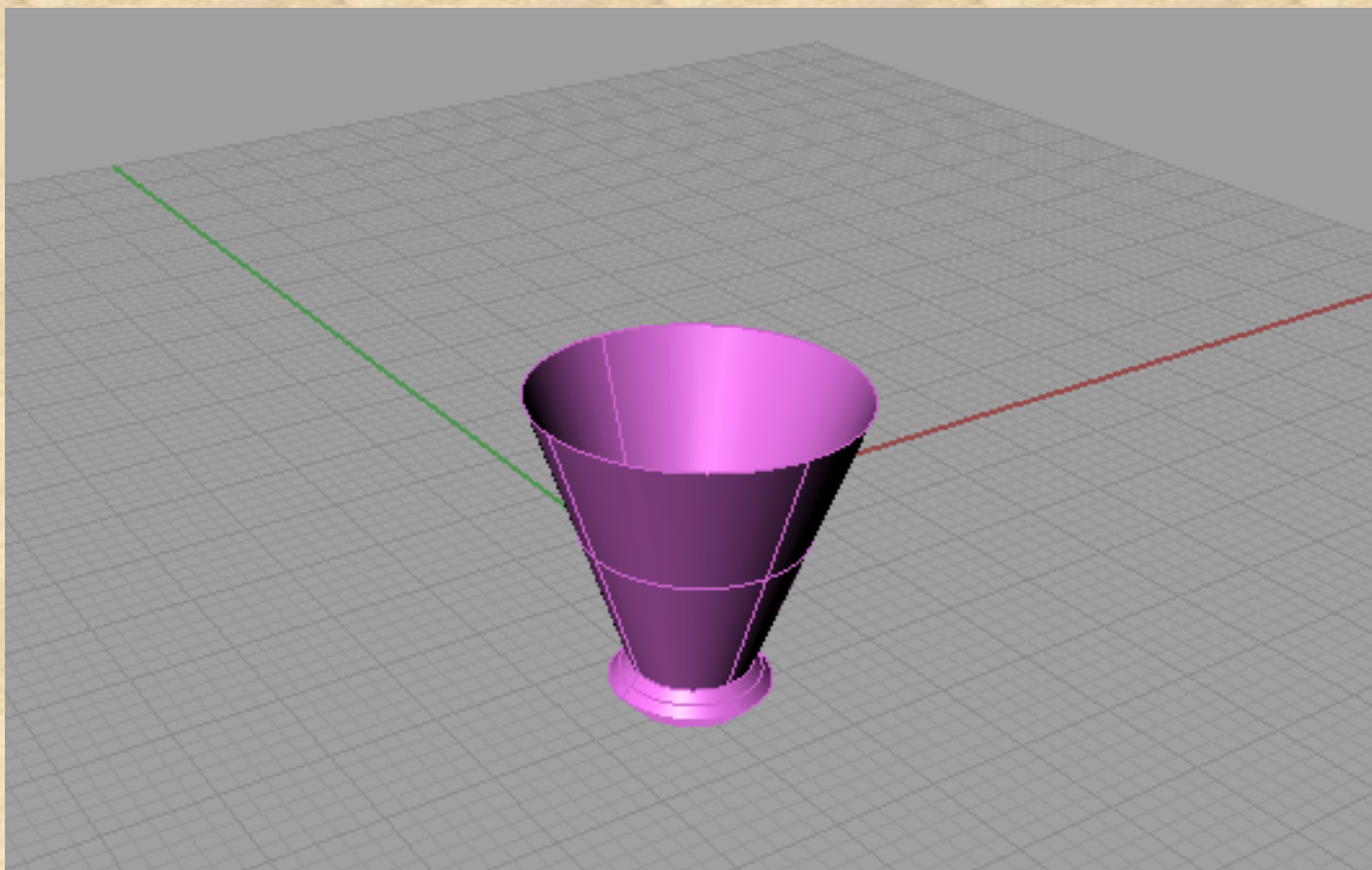
# Petrachi S. – Pellegrino R.

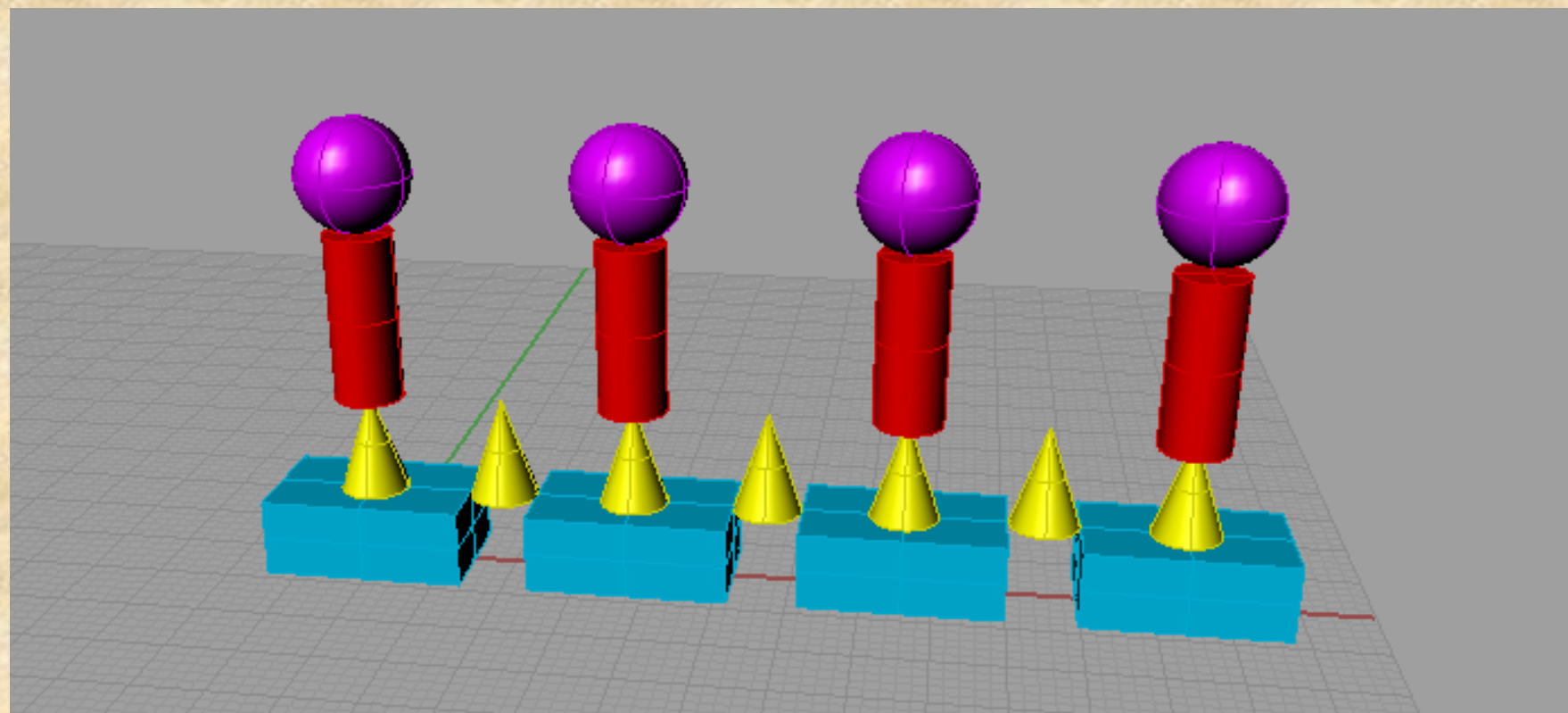
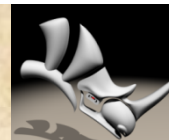




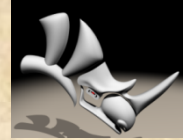


# Lezzi C. – De Pascalis C.





# Elenco dei partecipanti al corso



- Carlone Alessandro
  - Cisternino Chiara
  - Coppola Silvio
  - Corineo Gabriele
  - Corvino Marco
  - Crety Elisa
  - De Luca Giulia
  - De Pascalis Chiara
  - De Vivo Vanessa
  - Di Leo Giulia
  - Di Renzo Simone
  - Fanales Giulio
  - Filograna Federico
  - Greco Elisabetta
  - Lezzi Chiara
  - Mariano Salvatore
  - Pellegrino Rebecca
  - Petrachi Sara
  - Potenza Arianna
  - Santoiemma Pierluigi
- Tutor: Prof.ssa Maria Rita Capodacqua  
Prof. Antonio Calò Macchia
  - Docente: Ing. Giambattista Benizio